

TOURISM
CENTRAL AUSTRALIA

Proud Member

EXPLORE.

FREE
MAPS

TENNANT CREEK VISITOR GUIDE

EXPLORERS WAY – **BARKLY REGION** – BINNS TRACK
KARLU KARLU / DEVILS MARBLES
IYTWELEPENTY / DAVENPORT RANGES



Karlu Karlu / Devils Marbles by Efsta Konadaris



explore  .com.au



CONTENTS

Welcome	4
Attractions & Events	6
Camping & Accommodation	8
Shopping	10
Community Clubs	12
Travel with Pets	13
Maps	
Barkly Region - Aileron - Dunmarra	3
Tennant Creek Town Map	14 - 15
Tingkarli/Lake Mary Ann	17
Karlu Karlu/Devil's Marbles	21
Ilytwelepenty/Davenport Ranges National Park	22
Binns Track	25
Great Outback Drives	
Explorers Way	18 - 21
Binns Track	22 - 25
Distance Grid	26 - 27
North of Tennant Creek	18
South of Tennant Creek	20
Suggested Itinerary	23
Road Trips / Birds / Distance Grid	27



When crossing from Queensland into the Northern Territory you need to put your clocks back ½ hour.

Neither place has daylight saving. South Australia and the Northern Territory usually share the same time, except from October to March, SA is one hour ahead.

If crossing from Western Australia into the Northern Territory add one and a half hours.

Published & Distributed by



SCAN + DOWNLOAD + LINKS!!

Make the most of the Guide-on-line while you are in Mobile range. Easy links to NT Parks Fact Sheets, websites and other handy tips for your travels.

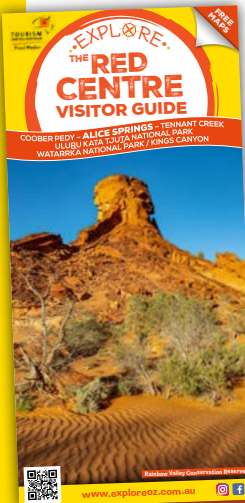
marketing@absoluteme.com.au
www.exploreoz.com.au

Photo Credits: Tourism NT Image Library, Shutterstock, Harry Dodds, Efsta Konadari

Front Cover: Efsta Konadaris Photography
[facebook.com/EfstaKonadarisPhotography](https://www.facebook.com/EfstaKonadarisPhotography)

Graphic Design: Gap Road Design Co.

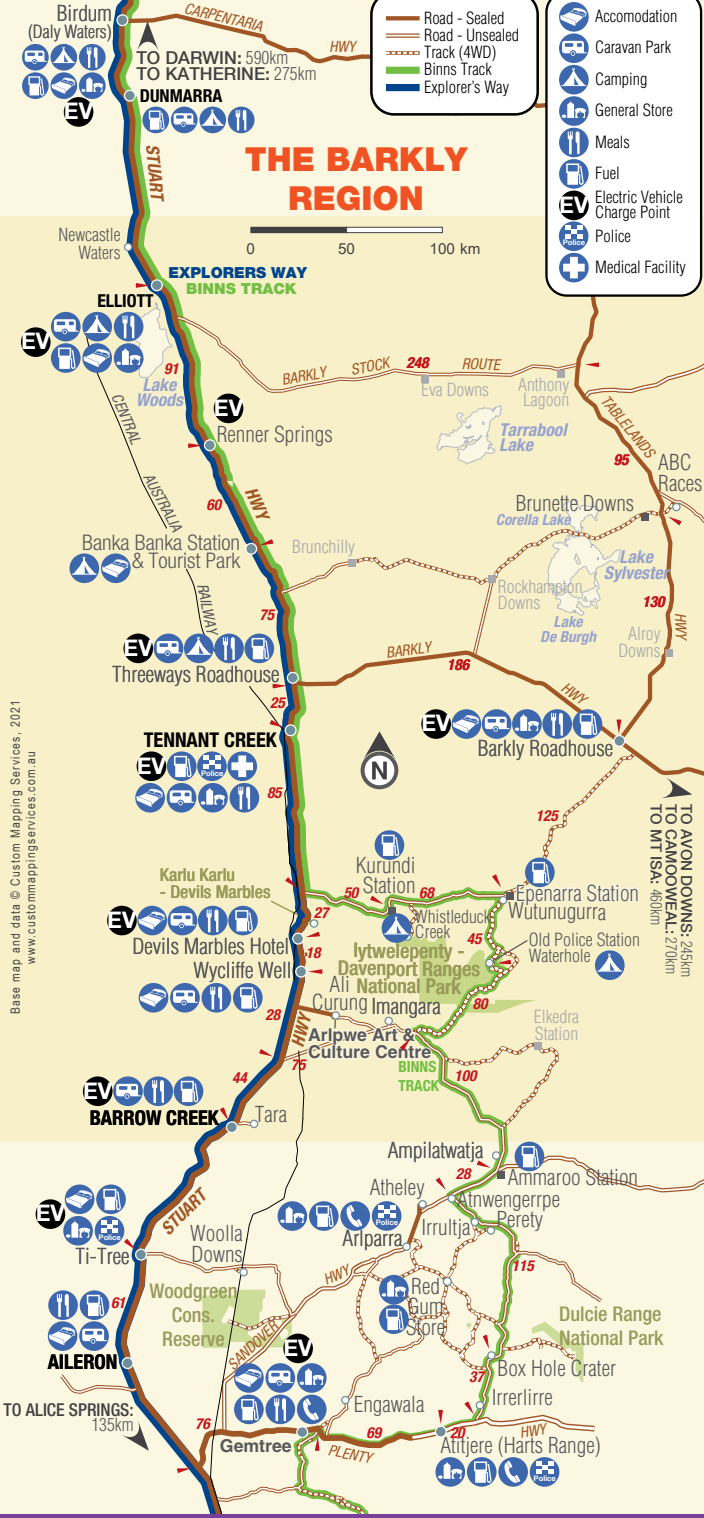
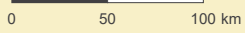
All information included in this guide is for general use only. Times/Fees/Dates are subject to change without notice. All images are subject to change and may not reflect each product or service.



- Road - Sealed
- Road - Unsealed
- Track (4WD)
- Binns Track
- Explorer's Way

- Accommodation
- Caravan Park
- Camping
- General Store
- Meals
- Fuel
- Electric Vehicle Charge Point
- Police
- Medical Facility

THE BARKLY REGION



Base map and data © Custom Mapping Services, 2021
www.custommappingservices.com.au



Karlu Karlu/Devils Marbles

WELCOME

The Barkly Region extends from Barrow Creek in the south, to Newcastle Waters in the north and east to the Queensland border. It is a vast region, steeped in both traditional Aboriginal culture and prime cattle country.

The region covers over 300,000 square kilometres, yet it is sparsely populated by only approximately 7000 people. Half live in Tennant Creek; the rest are scattered across remote communities and cattle stations.

TENNANT CREEK AVERAGE TEMPERATURES

	Jan	Feb	Mar	Apr	May	Jun	Jul	Aug	Sep	Oct	Nov	Dec
High	37°	36°	35°	32°	28°	25°	24°	27°	31°	35°	37°	38°
Low	25°	24°	23°	19°	15°	12°	11°	13°	16°	21°	23°	24°

The climate is dry and warm in winter, with huge open skies that are clear and brilliant blue during this Dry season; and spectacularly stormy during the Wet (summer), and never better viewed than at night-time when you'll marvel at the millions of stars you normally can't see in built-up areas! The land is red, rich in minerals and steeped in the history of the last great gold rush of this nation.

Tennant Creek is the central hub of the Barkly Region. It sits on Warumungu Country, with all twelve of the adjacent different Aboriginal languages spoken, as over the years, people have migrated into town from surrounding areas. The town has a relatively short history, having been born out of that last gold rush back in the 1930s, so local Aboriginal people still follow traditional customs and lore.



Emu footprint

Kangaroo tracks

WARUMUNGU WORDS

WARUMUNGU WORD	TRY TO SAY THE WORDS!	WHAT THEY MEAN <i>Not all words can be easily translated into an English meaning</i>
Karlu Karlu	<i>Gull-oo-Gull-oo</i>	Karlu Karlu also known as Devils Marbles
Warumungu	<i>Warra-moong-oo</i>	Local nation for the area
Karmente	<i>Gummen-da</i>	Goodbye
Tjukurpa	<i>chook-orr-pa</i>	Creation time, law, way of life, story
Nappa	<i>Nar-pa</i>	Water



Jurnkurakurr Mural

You will find a lively community of interesting locals. The Golden Heart reputation began with the mining era, but these days it is held sacred in the generous nature of the local inhabitants.

Take your time travelling through this region, it is a great place to slow your pace, take in the vast surroundings and enjoy the peaceful sound of the wind through the gumtrees, or whistling around the spinifex grass. There are plenty of opportunities to spot local wildlife and take beautiful photos.

It is a timeless landscape, which invites you to take your time. Have a yarn with the locals, there is always someone to chat with, whether a fellow traveller at a rest stop, or a local at the bar!

Whether you travel the bitumen highways, or go off-road on the Binns Track, you will find yourself in locations with no mobile or internet service, a disadvantage to some in the modern world, but a blessing for all those who long to switch off, to take in the surroundings and bask in the sunshine of our beautiful seasons.

Fuel supplies are a long distance between in the NT, so top up the tanks whenever you get the opportunity.

Mobile network coverage is limited from the outskirts of most outback towns. Download all maps, guides, fact sheets, audio guides while you have mobile coverage. Look for Wi-Fi hotspots located in more remote tourist sites.

BARKLY REGIONAL ARTS

Based in Tennant Creek, through its various programmes, Barkly Regional Arts promotes access, development, and recognition of both visual artists and musicians living remotely in the Barkly Region.

Art from the Barkly region celebrates and preserves ancient cultures and languages. It brings the community together, fosters social and spiritual fulfilment and provides employment and income.



 **Barkly Regional Arts**
ARTISTS OF THE BARKLY

EXPERIENCE THE ART OF THE BARKLY

Visit our Studio Gallery in Tennant Creek

Barkly Regional Arts
65 Staunton St, Tennant Creek
Monday – Friday, 8 am – 4:30 pm

Wild Flower Landscape, Suse Peterson, 2021
Acrylic on Canvas





Nyinkka Nyunyu Art & Culture Centre

ATTRACTIONS

NYINKKA NYUNYU ART & CULTURE CENTRE

Pronounced ny-ink-a ny-oo ny-oo, this gallery celebrates the art and traditional culture of the Warumungu people, on whose land Tennant Creek exists. The centre's focus is the sacred creation site of the Nyinkka (spiky tailed goanna). Currently undergoing an exciting redevelopment so drop in for a coffee to see the progress.

BATTERY HILL MINING CENTRE

Located on the grounds of one of the original Government Stamp Batteries, used by the early miners to grind the dense ironstone to dust and releasing the precious gold sands. Discover the history, science, and the thrill of gold mining in the Barkly region. Enjoy an underground mine tour (fees apply) or wander through the three museums exhibits. Take a self-guided nature walk or admire the static machinery displays found around the site.

DESERT HARMONY FESTIVAL

Barkly Regional Arts' annual Desert Harmony Festival is back in 2024, taking place from Friday 2 to Sunday 5 August at the Karguru Centre in Tennant Creek. The festival is a celebration of the Barkly's diverse, artistically-rich community through food, dance, music, visual arts and film.



TENNANT CREEK EVENTS 2024

MAY 2024

Tennant Creek Cup May 18

A chance to dress up and try your luck with the locals and bookies.

JUNE 2024

ABC Brunette Down Races June 20 - 23

Venture off-road to enjoy a truly Outback event. Camping facilities at the Brunette Downs Station.



JULY 2024

Territory Day July 1

July 1st, Fireworks help celebrate the day the NT declared independence from the Commonwealth Government in 1978.

territoryday.nt.gov.au

Tennant Creek Show July 12

The second Friday in July is the Tennant Creek Show Day, an opportunity to enjoy cattle displays, a dog show and local arts & crafts.

AUGUST 2024

Desert Harmony Arts Festival Aug 2 - 5

Check their website for festival events calendar and a great opportunity to engage with locals and celebrate your visit to Tennant Creek.

barklyarts.com.au

FUN FACT

DID YOU KNOW? On the 8th December 1938, the largest gold nugget ever found in the Barkly region was discovered by Albert Lane and Jack Noble. It weighed 31 ½ ounces (almost 900g)!



Battery Hill Gold Mining & Heritage Centre

Tennant Creek | Northern Territory

Discover the history, science and thrill of Gold Mining in Tennant Creek and The Barkly.

Underground Mine Tour **plus**

- McLaughlin Mineral Collection
- The Borella Museum '100 Years of ANZAC spirit'
- Freedom, Fortitude & Flies

160 Peko Road, Tennant Creek

08 8962 1281

batteryhill@discoverca.com.au

Incorporating the

Tennant Creek Visitor Information Centre

Opening hours

Monday - Friday 9.00am - 5.00pm

Saturday & Sunday 9.30am - 4.00pm

P. 08 8962 1281 | Battery Hill, Peko Road - turn east at Westpac

f@visitBatteryHill | **@**@visitbatteryhill

batteryhill@discoverca.com.au



CAMPING & CARAVAN ETIQUETTE

NOISE - Keep your music and noise to a level that is polite for your space only. If you are in a family park, which most are, children will always be children. Be tolerant.

PETS - You may love your pets, but others may not. Always have your animals on a lead, fenced in, or appropriately caged. Always pick up waste after your animal.

WATER - Check with each park if there is a fee for filling tanks due to drought. Some places are grateful for your grey water on the ground, others not so. Check first.

AMENITIES - Never empty your toilet cassette in the ablution block of any public toilet. Always clean up after yourself in shared bathrooms. Think of others.

SPEED LIMITS - Stick to the speed limit. You are on holidays. Slow down.

MIND YOUR SPACE - Don't cut through other people's sites, especially under their awnings, just to save a few steps. Be neighbourly.

RUBBISH - Dispose of your rubbish in bins provided. Otherwise dispose of it at your next opportunity.



ACCOMMODATION

Tennant Creek offers a range of accommodation options from Motel rooms to bush camping and is a great place to base yourself to make the most of what the Barkly region has to offer.

Out of town, there are roadside rest areas along both the Stuart and Barkly Highways, which are signposted offering overnight camping with basic facilities.

Please note that overnight camping is not permitted within the town limits, nor is it allowed at Tingkarli/Lake Mary Ann recreational reserve or at Kunjarra/The Pebbles. You need to book online for camping at Karlu Karlu/Devils Marbles Conservation Reserve. Overnight camping is allowed out at Kunjarra/The Pebbles and for a small fee, overnight camping is also allowed at Karlu Karlu/Devils Marbles Recreational Reserve.

Don't forget to allow rest and relax days where you can slow down and enjoy the sounds of the outback. Sit by the pool at your motel or caravan park or read a book.

Parks & Wildlife have introduced an online booking system. Check all Parks for site availability prior to arrival.



THRIFTY TENNANT CREEK



Call direct and speak to a passionate local who can offer not just vehicle options but local knowledge of the region. Flying in or need a vehicle while yours is being repaired, Thrifty are here to help.

59 Paterson Street, NT, 0860, Australia
P: (08) 8962 3040 or 13 61 39

www.thrifty.com.au



102.1 FM

8CCC COMMUNITY RADIO
ALICE SPRINGS & TENNANT CREEK

TUNE INTO THE SOUNDS OF OUR COMMUNITY

MANY VOICES ONE FREQUENCY

8CCC.COM.AU



Like us on Facebook
[/8CCCRADIO](#)



Follow us on Twitter
[@8CCCRADIO](#)



Follow us on Instagram
[@8CCCRADIO](#)



Streaming & On Demand
[8CCC.COM.AU](#)



Outback Outfitters

SHOPPING

BOTTLE SHOPS

We know the NT is warm, thirsty weather, but if your tippie is alcoholic, you'll need to plan ahead. Tennant Creek is a 'dry town' meaning that you cannot consume alcohol in public places within the town region. Bottle shops are open from 4pm until 7pm, Monday till Saturday, closed on Sundays. You will need photo ID to purchase alcohol and daily purchase limits apply.



Each region may have it's own take away bottle shop hours which can change at short notice, so check here to find out the most current trading times.



Mon-Sat 4pm-7pm

Closed Sundays

*Times may differ on public holidays

Easy parking out the front

(08) 8962 2307

44 Paterson St

UNITED CHEMISTS TENNANT CREEK



Make sure you have all your medical supplies topped up while you travel. A great range of Chemist items, with a Newsagency for all your reading needs, stock up before you head off exploring.

123 Paterson Street, NT, 0860, Australia

P: (08) 8962 2616 | E: tennantcreek@udc.net.au

www.unitedchemist.net.au

OUTBACK OUTFITTERS



Whatever style of menswear you're after we have what you need. From work wear, clothing, shoes and accessories, we stock all the great brands and plenty of them!

Enjoy easy parking and friendly service.

A: 1/44 Paterson St, Tennant Creek

P: 08 8962 1957 M: 0458 015 321

outbackoutfitters@bigpond.com

LEADING EDGE

Computers

jaycar

Switched  Service

AUTHORISED STOCKIST

Home & Business Computer Sales
 Printers, Fax Machines & Consumables
 Upgrades, Service & Repairs
 Office Furniture
 Data Backup & Recovery
 Warranty Agents for HP, Toshiba, ASI, Edsys



Network Support & Solutions
 Custom-built Systems (PCs & Servers)
 Managed Service Agreements
 Telephone Systems
 Internet Access & Solutions
 Jaycar Stockist

LEADING EDGE COMPUTERS
TENNANT CREEK PTY LTD

8963 2300

38 PATERSON ST TENNANT CREEK • FAX: 8962 3127



THE DEPARTMENT STORE WITH MORE

The Best Deals in Town! One Stop Shop!

Clothing • Shoes • Furniture
 Whitegoods • Luggage + more!

PH: 08 8962 3166 • 34 Paterson Street
www.littleripperslifestyles.com

ENTERPRISE
 ELECTRICS • FURNITURE
 JEWELLERY • GIFTWARE

FURNISHING THE BARKLY SINCE 1980



OUR LARGE VARIETY INCLUDES:

Greyhound Booking Agent • Tilleys Candles & Soaps • Gifts
 Jewellery • Toys • White Goods • Furniture • Homewares
 Educational Toys • Home Entertainment • Telstra Phones & Credit
 Power Cards • Manchester & Much More

Free Delivery Within Town Boundries
 40 Paterson St • (08) 8962 2280

COMMUNITY CLUBS

proudly presented by

STEVE EDGINGTON MLA – MEMBER FOR BARKLY



MLA Mr Steven Edgington invites you to visit the range of local community and service clubs to really get to know the locals.

PO Box 796, Tennant Creek, NT 0861
114 Paterson Street, Tennant Creek, NT 0860
P: (08) 8962 4641



electorate.barkly@nt.gov.au



BARKLY AUSTRALIAN FOOTBALL LEAGUE

Featuring Clubs from the Barkly region. From May-Sept, Purkiss Reserve



LIONS CLUB OF TENNANT CREEK

Meets at 7pm, 1st & 3rd Wednesday each month at the Memo Club
0400 395 525



kate.m.foran@gmail.com



NATIONAL TRUST TC BRANCH

Call in, and step into the past. Open limited hours.
49 Schmidt St



nationaltrusttennantcreek@gmail.com

CWA OF TENNANT CREEK

Visitors Welcome
16 Noble Street
0418 825 856



cwa.tennantcreek@gmail.com





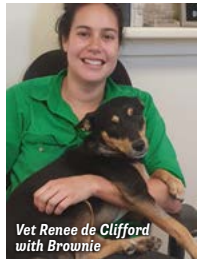
TRAVEL WITH PETS

KEEP A LOOK OUT!

New to Australia, Ehrlichiosis is a dangerous dog disease, carried by brown ticks found across northern Australia. Left untreated, it can be fatal, so please use tick prevention to keep your dog safe.

PREVENTION MEDICATIONS

- Internal medicines will kill any ticks on your dog. Just be mindful that if infected, it is that tickbite which infects your dog! Ehrlichiosis isn't passed simply from dog to dog, it spreads through the ticks.
- The first line of defence is a fresh tick repellent collar. Note the date and change as required. Most collars work best when kept dry.
- Regularly inspect your dog. Ticks hide in small crevices: inside ears, between toes and under their paws, between the pads.
- When travelling north, ask your vet about Heartworm prevention.
- Heartworm is spread by mosquitos. Protection is available via an annual needle or monthly tablets.



*Vet Renee de Clifford
with Brownie*

PET TRAVEL TIPS

- Carry your pet's medical info, including vaccination records.
- Ensure your pet is harnessed or crated for their own protection in the car.
- Carry extra water & bowls to allow for the heat.
- Remember heat affects their paws as well. Be mindful of hot ground!
- Take care when out bush, baits are used to protect stock in the NT.



DID YOU KNOW?

Kunapa - pronounced Kunn-upp-pa - is the Warumungu word for dog!!

BARKLY VETERINARY PRACTICE



Trusted by locals, we open Mon-Fri & after hours for emergencies. See us for any pet health issues and advice.

1 Maloney Street, Tennant Creek
0447 471 399

www.facebook.com/BarklyVetPractice



Pink Mulla Mulla (Ptilotus exaltatus)



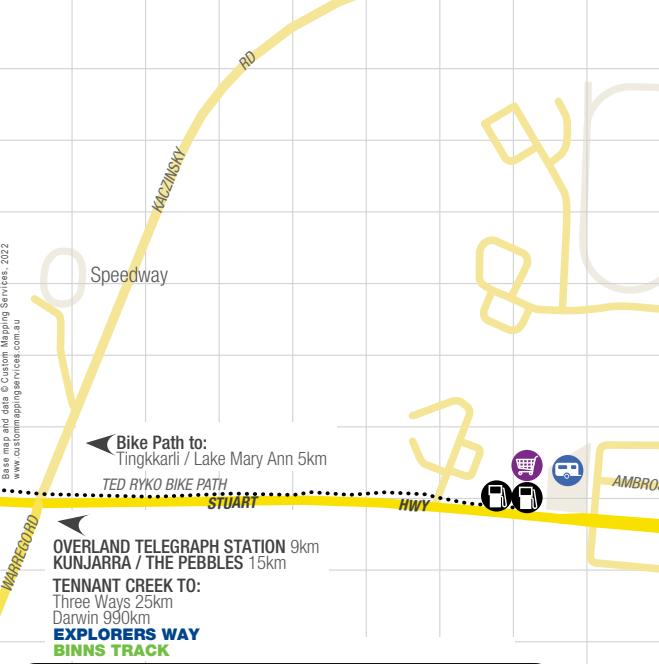
Skeleton Plant (Ptilotus fusiformis)



Tickweed (Cleome viscosa)



Broad Leaved Paperbark (Melaleuca quinquenervia)



- | | | | | | |
|-----|----------|---------------------------|-----|-----------|--|
| R14 | 1 | Little Rippers Lifestyles | R12 | 6 | Thrifty Tennant Creek |
| Q13 | 2 | Outback Outfitters | Q11 | 7 | Steve Edgington MLA |
| R14 | 3 | Leading Edge/Jaycar | Q11 | 8 | United Chemist |
| Q14 | 4 | Enterprise Electrics | U15 | 9 | Barkly Veterinary Practice |
| Q13 | 5 | Headframe Thirsty Camel | G13 | 10 | Battery Hill Gold Mining & Heritage Centre |

Tennant Creek Airport

TENNANT CREEK TOWN MAP



To Tennant Creek Golf Course:
5km

Bill Allen Lookout

Tennant Creek Visitor Information Centre & Battery Hill Mining Centre



Jubilee Park Racecourse & Showgrounds



- Main Roads
- Other Roads
- Bike Path
- Information Centre
- Police
- Hospital
- Pharmacy
- Fuel
- Electric Vehicle Charge Point
- Post Office
- Supermarket
- Caravan Park
- RV Dump Point
- Swimming Pool
- Lookout



Barkly Shire Office

Tennant Creek High School

Library
Civic Centre

STAUNTON

Karguru Centre

Purkiss Reserve



Sports Centre



Peko Park



AMBROSE

GARNETT ST

STAUNTON

MEYERS

ST

WIEBER

ST

ST

PATERSON

ST

ST

ST

ST

ST

ST

ST

ST

ST

ST

ST

ST

ST

SCOTT ST

ST

ST

ST

ST

ST

ST

ST

ST

ST

ST

ST

ST

ST

IRVINE

ST

ST

ST

ST

ST

ST

ST

ST

ST

ST

ST

ST

ST



Nyinkka Nyunyu Art and Cultural Centre



TENNANT CREEK TO:
Alice Springs 508km
EXPLORERS WAY
BINNS TRACK

Julalikari Aboriginal Corporation





Tennant Creek Overland Telegraph Station

OVERLAND TELEGRAPH STATION

Tennant Creek Overland Telegraph Station was completed in 1872, so be on the lookout for 150th Anniversary celebrations! Located near the actual Tennant Creek watercourse, 12km north of town, this heritage site offers visitors an insight into the early living and working conditions of the employees.

The single copper wire, running from Adelaide to Darwin, a mighty 3600km long was the only communication link between Australia and England. This was strung along a path mapped by intrepid explorer, John McDouall Stuart, after whom the highway is named.

Take the self-guided walk around the reserve if you pick up a key and information sheet is available at the Visitor Information Centre (deposit required) and explore the historic station buildings made of local stone.

On a walk through the station buildings, you'll also learn of the discovery of gold in the area in 1925 and how thousands flocked to Tennant Creek. Explore at your own pace the interesting interpretive signage explaining the use of such rooms as the The Cellar, The Smoke House and in other buildings the Blacksmiths Workshop. A 100m stroll you will discover the Cemetery, the resting place of pioneers of the past.

KUNJARRA/THE PEBBLES

Kunjarra is the Warumungu traditional name for The Pebbles, an outcrop of red granite boulders smaller than the Devils Marbles. Signage explains the traditional customs here, and walking paths guide you to wander between the clumps of boulders, enjoying the colours of the rocks. Best viewed when the sun is low in the sky, at sunrise or sunset, to get the richest red colours in the boulders. Enjoy a picnic at the tables here, with toilets onsite and overnight camping allowed.



Kunjarra / The Pebbles



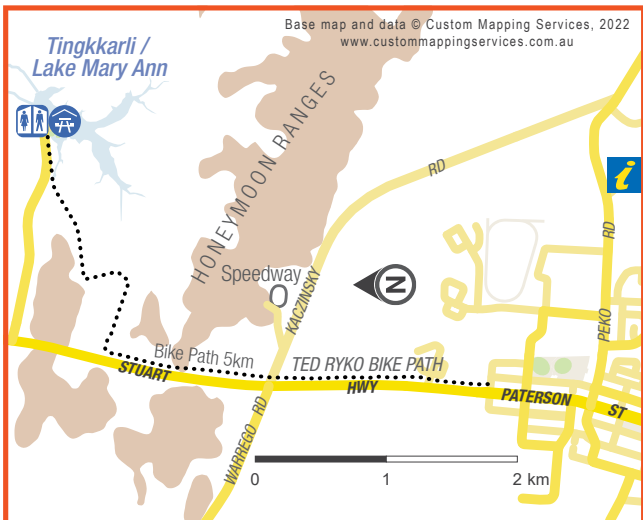
Tingkarli / Lake Mary Ann

TED RYKO BIKE PATH

The Bicycle Path which leads from Tennant Creek, through the hills of the Honeymoon Range, and out to Tingkarli/Lake Mary Ann, is named after Ted Ryko (full name Eddie Reichenbach) who set the unbroken bicycle record from Adelaide to Darwin back in 1914. This arduous journey took him just 28 days! Walkers and cyclists enjoy the path which meanders through the hilly range, offering sights of local birds and wildlife. A quiet walker may see beautiful lizards crossing the path.

TINGKARLI/LAKE MARY ANN

A lovely recreational watercourse, constructed by the NT Government in 1980. The dam wall closes off a valley which fills from the catchment area of Mary Ann Creek. Non-powered water sports are enjoyed here, such as swimming and kayaking. The view across the lake can be enjoyed from lush green lawns, with shady trees, BBQs and picnic tables, along with a fabulous new playground area. Take the walk around the lake to enjoy the natural bushland on the other side.



Lake Mary Ann Mural



NORTH OF TENNANT CREEK

EXPLORERS WAY

REV. JOHN FLYNN

North of Tennant Creek, at the junction of the Stuart and Barkly Highways, just past Threeways Roadhouse, is the memorial obelisk constructed to celebrate the local significance of the Rev. John Flynn. A Presbyterian Minister, Flynn surveyed the needs of remote inhabitants of the Northern Territory in 1912. His report led to the creation of the Australian Inland Mission, with Flynn as Superintendent.

Recognising the needs of isolated remote communities, Flynn's efforts resulted in a network of nursing hostels, which grew into the Royal Flying Doctor Service, still providing a 'mantle of safety' in the Outback today!

Further south, at Karlu Karlu/Devils Marbles Conservation Reserve, is another story relating to Reverend Flynn.

CHURCHILL'S HEAD

As you travel this route, you are following in the footsteps of a quarter of a million military servicemen and women who travelled this route during WWII, to defend Australia following the attacks on Darwin in 1942. A natural outcrop of rock resembling Britain's Prime Minister at the time, Winston Churchill, had a tree branch inserted into the rocky 'mouth' to resemble his cigar, cementing the site as a popular military resting spot, still known as Churchill's Head today.



Jones Store, Newcastle Waters

WATCH FOR WEDGE-TAILED EAGLES!

Slow down if you see a Wedge-Tailed Eagle feeding on the side of the road. With huge wingspans of up to 3 metres they can be slow to take flight. These big birds of prey are easily injured and can do extensive damage to a vehicle. Slow down and be aware.





Jones Store, Newcastle Waters

NEWCASTLE WATERS

280 kms north of Tennant Creek on the Stuart Highway, Newcastle Waters is the northern boundary of the Barkly Region. A sealed 3km drive into Newcastle Waters Historic Township show the this important staging post, with the town providing critical communications in such a remote location. The surviving buildings are worth a visit, along with the Drover's memorial statue paying respect to the critical local cattle industry.



DUNMARRA ROADHOUSE

Dunmarra is a fine example of the welcoming roadhouses scattered around the Barkly Region. There is a selection of cabins to stay in, or a camping ground to pull up at. Amenities include a restaurant and lounge to relax in. The food is renowned up and down the track. You don't want to miss out on treating yourself to the homemade vanilla slices; they are divine. And an in-house brewery coming soon!

OUT BACK BREWERY

Coming Soon!

The Best Vanilla Slice & Home-Made Pies & along the Explorers Way!

New Cabins!

Motel Rooms • Swimming Pool
Caravan Park - Shady Sites
Take Away Food• Dine-In Meals
Licensed Bar • Airstrip
Base yourself here and enjoy
birdwatching & WWII
connections all close by



Stuart Highway

358kms North of Tennant Creek
315kms South of Katherine
Ph: 08 8975 9922
Open: Early to Late 7 Days



UNCONVENTIONAL COMPASS

Hold your watch horizontal to the ground, point the 12 towards the sun.

Mid-point between the 12 and hour hand indicates the north-south line.



SOUTH OF TENNANT CREEK

EXPLORERS WAY



KARLU KARLU

100kms south of Tennant Creek, Karlu Karlu is the traditional Aboriginal name for Devils Marbles, the most famous landscape of the Barkly Region. Historically, this site was a meeting point for four neighbouring Aboriginal language groups, Warumungu, Kaytetye, Alyawarre and Warlpiri.

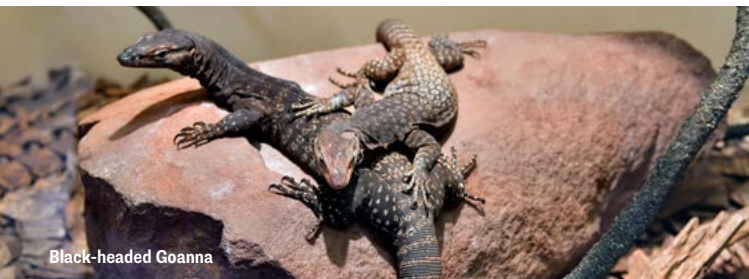
There are many traditional stories attached to this landscape, but the one offered for visitors is that a spiritual devil man, Arranji, walked through the valley spinning hair strings, important to men's cultural ceremonies., dropping them to the ground which then formed into the boulders which lay in clumps, precariously balanced upon each other.

Local people believe that the spirit of Arranji remains resting at Ayleparrarntenhe, a twin peaked hill to the east of the public reserve.

A more modern story of this place relates to The Rev. John Flynn, founder of the Royal Flying Doctor Service. Flynn's ashes were buried on Larapinta Road, heading west out of Alice Springs, and a boulder was selected and removed from Karlu Karlu, to be placed on a plinth to commemorate the importance of Flynn, in the early 1950s. Finally, in 1999, the Arrernte people of Alice Springs selected a local rock and the 8 ton boulder was returned to its traditional home, back at Karlu Karlu.



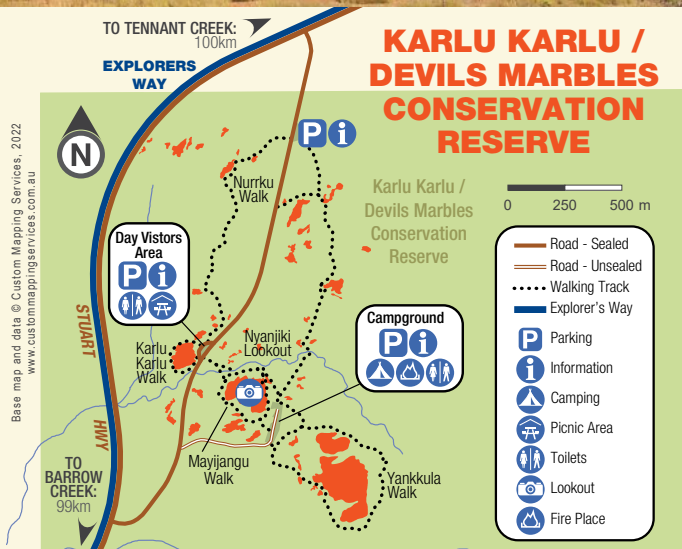
Elders at the time guided the cranes to return the boulder to its exact original place. Today the boulder can be identified due to being sandblasted to remove graffiti, so it is lighter than other rock forms. It is seen as a metaphor for reparation, but not without change. You can see it now in its original position, just south of the main day visitor car park area.



Black-headed Goanna



Karlu Karlu/Devils Marbles



Base map and data © Custom Mapping Services, 2022
www.custommappingservices.com.au

Walking

There are several walks to enjoy, including the Nyanjiki Lookout providing a panoramic view of the Reserve. The Karlu Karlu walk is an easy short walk (20 minute return) which commences from the day use area carpark. Signs explain the formation of the Karlu (Marbles). The 4 km Nurrku Walk provides visitors with a longer opportunity to experience the wider Reserve.

Camping Fees apply -Cash only - No change available onsite
Pets are not permitted in the campground.

FLORA & FAUNA IN THE REGION INCLUDE:

Sand Goanna - Black-headed Goanna - Fairy Martins - Zebra Finches - Painted Finches - Spinifex - Native Rock Fig



Grey Fronted Honeyeater



Pictorella Mannikin



Painted Finch



Whistle Duck Creek

IYWELEPENTY/DAVENPORT RANGES

PART OF THE BINNS TRACK

This National Park overlays a rich living cultural landscape of the Alyawarr, Wakaya, Kaytete and Warumungu traditional owners. Experience the quiet beauty of this park, with access via high clearance 4WD only. Discover European heritage sites from early pastoral and mining days.

Explore this out of the way network of permanent waterholes, and beautiful outback landscapes, on some of the best four-wheel drive tracks in the NT. These tracks criss-cross the 1120 square kilometre park, including a challenging 17-kilometre Frew River loop track to the Old Police Station Waterhole. Stay in the camp sites at the Old Police Station Waterhole or at Whistleduck Creek. Enjoy swimming in the cool waters or just soak up the serenity.

Camping Fees apply -Cash only - No change available onsite

There are only basic camping facilities in the Park so come well prepared. Wood BBQs and Pit Toilets are available. Camping is only permitted in designated camping areas.

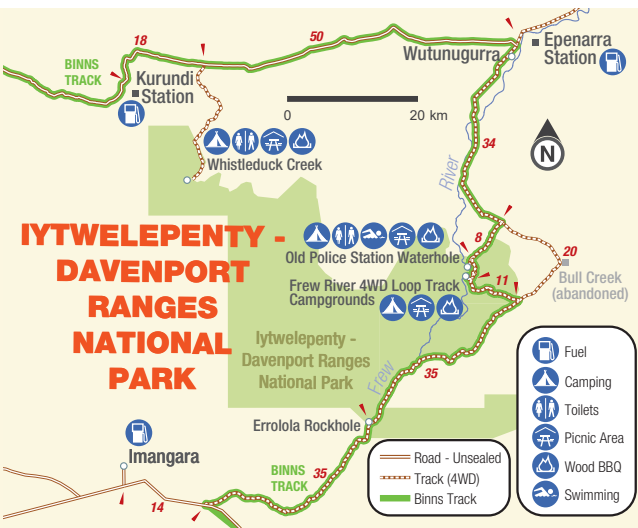


Pets are prohibited.

This is an ecologically significant & diverse area so please leave only footprints and respect the water and surrounds.

FLORA & FAUNA IN THE REGION INCLUDE

Blackfooted Rock Wallaby - Emu - Australian Bustard - Bush Turkey - Zebra Finch - Dusky Grasswren



5 DAY SUGGESTED ITINERARY

DAY 1

- ▶ Visitor Information Centre
- ▶ Mining Centre - museums, nature walks, static machinery displays
- ▶ Bill Allen Lookout
- ▶ Local Shopping - Main Street

DAY 2

- ▶ Enjoy coffee and breakfast at Bay Leaf Cafe
- ▶ Tennant Creek Telegraph Station Historical Reserve - Information Sheet & deposit for key @ Visitor Centre
- ▶ Kunjarra / The Pebbles - Aboriginal Womens Dreaming

DAY 3

- ▶ Karlu Karlu / Devils Marbles - enjoy as a day trip only 100km south of Tennant Creek or camp overnight

- ▶ A photographer's delight - Sunrise / Sunset

DAY 4

- ▶ Nyinkka Nyunyu Art & Culture Centre - museum and exhibitions
- ▶ National Trust - Check for open times
- ▶ Jurnkurakurr Mural
- ▶ Peko Park
- ▶ Catholic Church
- ▶ Celebrity handprints

DAY 5

- ▶ Lake Mary Ann - shaded picnic area & tables/chairs, playground, swim/kayak/ water fun, abundant birdlife
- ▶ Ted Ryko Cycle Path
- ▶ Anzac Hill Lookout



20kms west off the Stuart Highway (good bitumen road)
350kms North of Alice Springs
150kms South of Tennant Creek

www.arlpwe.com

(08) 8964 1640 | 0448 708 347

manager@arlpwe.com



ARLPWE ART AND CULTURE CENTRE

Discover the Arlpwe Art and Culture Centre in Ali Curung (Alekaenge), an easy 15 min drive on bitumen all the way, off the Stuart Highway, 170kms south of Tennant Creek or 350kms north of Alice Springs. This 100% Aboriginal owned, non-for-profit gallery, has stunning works from artists from Kaytetye, Alyawarr, Walpiri and Warumungu Nations. Open usually from 10am-4pm Monday-Thursday or give them a call to see if you can drop in on your way through.

BARROW CREEK TELEGRAPH STATION

Barrow Creek was named in 1860 by John McDouall Stuart, this site for the Telegraph Station was chosen in September 1871 by John Ross' Overland Telegraph exploring party, which was assessing Stuart's route to set up a telegraph line through Central Australia. The site was chosen due to the presence of surface water and for a well site of about 10 to 12 feet. By 1880 the station was very much in its present form with an elaborate stone fence, wagon shed, blacksmith's hut, cemetery and a veranda on the western side of the main building.



BINNS TRACK

AN EPIC 4X4 ADVENTURE HIGHLIGHTING LESSER KNOWN SIGHTS

Binns Track is a marvellous alternative route to the Stuart Highway, a perfect playground for 4 wheel drive enthusiasts, which meanders off the bitumen, through vast cattle stations and stunning remote Aboriginal cultural landscapes. The entire track length is 2,230km and named after Mr Bill Binns, an NT Parks & Wildlife Ranger for 32 years, whose vision was to ensure that visitors to the NT were able to explore more of the wonderful local landscapes off-road, enjoying the vivid colours, native wildlife and magnificent rocky vistas.



SCAN ME



GEMTREE TO TENNANT CREEK - 509 km 2+ Days As you travel north, to Iltwelepenty/ Davenport Ranges National Park you can embrace the peaceful surrounds, enjoy a swim in the surprisingly beautiful waterholes or stay and camp in this tranquil setting. A short detour to Karlu Karlu/ Devils Marbles is a must do. Home to massive granite boulders which glow fantastically at both sunrise and sunset, an overnight stay here will produce some of your favourite photos of the whole journey!

TENNANT CREEK TO DUNMARRA - 355 km 2+ Days Stopover in Tennant Creek to discover gold history at Battery Hill Mining Centre or the unique Nyinkka Nyunyu Art & Culture centre. The Telegraph Station, and Lake Maryann, all north of Tennant Creek offer wonderful day trips. Then journey north, past Churchills Head, on your way to an overnight stay at Banka Banka then Dunmarra.

DUNMARRA TO TIMBER CREEK - 430 km 2+ Days

Aileron Roadhouse



Stay & Explore

- Caravan Park
- Motel
- Backpackers
- Wildlife
- Scenic Walks
- Art Gallery
- The famous 'Anmatjere Man' (17 metre statue)



Ph 08 8956 9703

www.aileronroadhouse.com.au

132kms North of Alice Springs
Stuart Highway, Northern Territory

ROAD TRIPS - DRIVE TIPS

- Travelling through the NT involves vast stretches of open road, whether on the bitumen or off-road 4WD tracks. The highway speed limit through the Barkly Region is 130km per hour, unless otherwise signposted.
- Reduce to a safe slower speed on unsealed roads, and do not attempt 4WD tracks with a 2WD vehicle.
- Don't drive tired, long distances and extreme heat can cause driver's fatigue, so stop and rest frequently (every 2 hours) at regular rest stops.
- Many roads pass through national parks and stations. Avoid driving at dusk, dawn or in the dark as stock/wildlife may cross the roads. Do not swerve suddenly and safely reduce your speed.
- Don't drive in convoys, especially if towing a caravan. Allow at least 200m between vehicles, to allow road trains to overtake safely.



FLOCKING TO THE BARKLY REGION

The Barkly region is treat for all bird enthusiasts. With little water to the south and the tropics to the north, this region is a transitional area for many unique birds.

Take the time to explore a few key areas of interest including the Tennant Creek Water Waste Treatment Plant, via Fazeldeen Road. You could be lucky to see a huge variety of birds.

Other species are found at Lake Maryann, just a few kms south of Tennant Creek. In the hill area as you drive in, keep a look out for the Painted Finch, Crimson Chat, Spinifex bird, Spinifex pigeon and the Dusky Grass wren can be found in the rocky outcrops and as you get closer to the water.

Renner Springs north of Tennant Creek, to the south Karlu Karlu/Devils Marbles and Iywelepenty/Davenport Ranges also offer unique opportunities.

So, with your guidebook, camera or phone, enjoy a slow quiet pace and make the most of this special region has to offer.

- Dusky Grass Wren
- Red-Necked Avocet
- Grey Teal Duck
- Spinifex Pigeon
- Black-Winged Stilts
- Painted Finch
- Crimson Chat
- Spinifex Bird
- Red-Kneed Dotterels
- Black-Fronted Dotterels
- Hoary-Headed Grebe
- Orange Chat



Dusky Grasswren



Red-Necked Avocet



Orange Chat



Fairy Wren

	WCLIFFE WELL	WAUCHOPE	TIT TREE	TIMBER CREEK	THREWAYS	TENNANT CREEK	RENNER SPRINGS	PINE CREEK	MATARANKA	LARRIMAH	KULGERA	KATHERINE	JABIRU	ERLDUNDA
	820	841	639	1912	978	953	1114	1717	1520	1444	332	1626	1929	246
		20	182	1092	157	133	294	896	699	623	662	806	1108	575
		203	1069	143	111	281	874	679	603	673	784	1086	573	
		935	339	314	476	1077	881	805	480	1753	286	588	1666	
		161	763	566	490	818	649	951	732	708	1290	393		
		602	405	329	955	512	814	975	708	1471	1198	87		
		197	273	1557	91	213	869	708	1471	1198	87			
		76	1361	106	409	975	708	1471	1198	1683				
		1285	182	485	1198	87								
		1467	1770	485	1198	87								
		303	1380	87										

FIND THE WONDER WORD!

Circle each word or letter and tick them off the list.

See what the Wonder Word is with the letters that are left.

R	E	G	N	I	V	I	R	D	U
E	T	I	M	R	E	T	A	L	S
D	L	O	G	U	X	V	R	P	O
Y	K	S	M	Y	E	A	M	O	S
N	Y	I	N	N	K	A	R	L	L
P	N	A	P	U	C	A	L	A	I
E	L	O	L	Y	G	O	R	K	V
P	R	R	A	N	G	E	S	E	E
T	A	M	A	R	B	L	E	S	D
K	E	K	Y	R	E	T	T	A	B

Battery
Camps
Davenport
Devils
Driving
Gold
Kangaroo
Karlu Karlu
Lake

Marbles
Mine
Nyinnga
Nyunyu
Plan
Ranges

Red
Sky
Termite

	ELLIOTT	DUNMARRA	DARWIN	DALY WATERS	BROOME	BARROW CREEK	BARKLY HOMESTEAD	ALICE SPRINGS	ADELAIDE RIVER	ADELAIDE	DISTANCE GRID
										2911	Measured in kilometres Approximate distances only
										1384	ADELAIDE RIVER
										1531	ALICE SPRINGS
										2249	BARKLY HOMESTEAD
										1833	BARROW CREEK
										4266	BROOME
										2443	DALY WATERS
										3027	DARWIN
										2396	DUNMARRA
										2292	ELLIOTT
										1584	ERLDUNDA
										1331	JABIRU
961	1065	1696	1113	2937	491	919	200	1584	1331	1331	KATHERINE
722	618	255	576	1858	1198	1138	1484	299	3014	3014	KULGERA
420	315	316	273	1556	895	875	1181	203	2711	2711	LARRIMAH
1047	1152	1783	1199	3023	572	1005	286	1670	1268	1268	MATARANKA
237	133	498	90	1739	712	653	999	385	2529	2529	PINE CREEK
313	209	422	167	1663	768	729	1075	309	2605	2605	RENNER SPRINGS
510	406	226	363	1646	985	965	1271	113	2801	2801	TENNANT CREEK
92	196	828	244	2068	383	371	678	704	2199	2199	THREWAYS
253	358	989	405	1801	222	211	508	876	2038	2038	TIMBER CREEK
229	333	964	381	2205	246	219	533	852	2063	2063	TI TREE
706	601	601	559	1270	1181	1159	1467	489	1997	1997	WAUCHOPE
568	672	1303	719	2543	93	566	194	1190	1724	1724	WYCLIFFE WELL
366	466	1100	515	2342	88	363	397	985	1925	1925	YULARA
386	490	1121	538	2362	89	344	376	1009	1906	1906	
1207	1311	1942	1359	3183	731	1164	446	1829	1576	1576	

Wonder Word: EXPLORE

Wherever you go, take us with you

..EXPLORE..

**OUTBACK
SOUTH AUSTRALIA
& THE FLINDERS RANGES
VISITOR GUIDE**

BIRDSVILLE TRACK - OODNADATTA TRACK - STRZELECKI TRACK
STUART HIGHWAY - COOBER PEDY - SA/NT BORDER
PORT AUGUSTA - LEIGH CREEK - ROXBY DOWNS

..EXPLORE..

THE
RED CENTRE
**ART
TRAIL**

GALLERIES - ART CENTRES - ARTS EVENTS
LOCATION MAPS & MORE!

..EXPLORE..

**TENNANT
CREEK
VISITOR GUIDE**

EXPLORERS WAY - **BARKLY REGION** - BINNS TRACK
KARLU KARLU / DEVILS MARBLES
IYTWELEPENTY / DAVENPORT RANGES

..EXPLORE..

THE
**RED
CENTRE
VISITOR GUIDE**

COOBER PEDY - **ALICE SPRINGS** - TENNANT CREEK
ULURU-KATA TJUTA NATIONAL PARK
WATARRKA NATIONAL PARK / KINGS CANYON

..EXPLORE..

THE
**KATHERINE
REGION
VISITOR GUIDE**

MATARANKA - **NITMILUK GORGE** - PINE CREEK

Pick up a copy or
download our guides



explore  Z .com.au