

TOURISM  
CENTRAL AUSTRALIA

Proud Member



FREE  
MAPS

# EXPLORE. TENNANT CREEK VISITOR GUIDE

BARKLY REGION  
KARLU KARLU / DEVILS MARBLES – EXPLORERS WAY  
ITYWELEPENTY / DAVENPORT RANGES



TC8 Gold Mine, Udall Rd, Tennant Creek NT



explore<sup>oz</sup>.com.au



# CONTENTS

<b>Welcome</b>	<b>4</b>
Attractions & Events	6
Accommodation	8
Dining	11
Shopping	12
Community Clubs	14
<b>Maps</b>	
Barkly Region - Aileron - Dunmarra	3
Tennant Creek Town Map	16
Tingkarli/Lake Mary Ann	19
Karlu Karlu/Devil's Marbles	25
Ilytwelepenty/Davenport Ranges National Park	26
Binns Track	29
<b>Great Outback Drives</b>	
Explorers Way	20-21 & 24-27
Binns Track	28
Outback Way	22
Distance Grid	30
<b>North of Tennant Creek</b>	<b>20</b>
<b>South of Tennant Creek</b>	<b>24</b>
<b>Suggested Itinerary</b>	<b>32</b>
<b>Wonder Word</b>	<b>31</b>



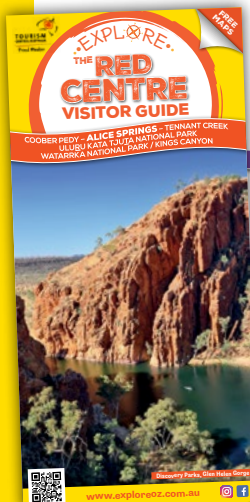
When crossing from Queensland into the Northern Territory you need to put your clocks back ½ hour.

Neither place has daylight saving. South Australia and the Northern Territory usually share the same time, except from October to March, SA is one hour ahead.

If crossing from Western Australia into the Northern Territory add one and a half hours.

Published & Distributed by

**Absolute**  
MEDIA & MARKETING



## SCAN + DOWNLOAD + LINKS!!

Make the most of the Guide-on-line while you are in Mobile range. Easy links to NT Parks Fact Sheets, websites and other handy tips for your travels.

[marketing@absoluteme.com.au](mailto:marketing@absoluteme.com.au)  
[www.exploreoz.com.au](http://www.exploreoz.com.au)

**Photo Credits:** Tourism NT Image Library, Shutterstock, Harry Dodds, Nicky Oosthuizen, Efsta Konadari

**Front Cover:** Efsta Konadaris Photography  
[facebook.com/EfstaKonadarisPhotography](https://facebook.com/EfstaKonadarisPhotography)

**Graphic Design:** Gap Road Design Co.

All information included in this guide is for general use only. Times/Fees/Dates are subject to change without notice. All images are subject to change and may not reflect each product or service.





# WELCOME

Welcome to the Barkly Region, with Tennant Creek proudly known as the Golden Heart of the NT! Vast skies, interesting characters and colourful landscapes await you.

Karlu Karlu/Devils Marbles

The Barkly Region extends from Barrow Creek in the south, to Newcastle Waters in the north and east to the Queensland border. It is a vast region, steeped in both traditional Aboriginal culture and prime cattle country.

The region covers over 300,000 square kilometres, yet it is sparsely populated by only approximately 7000 people. Half live in Tennant Creek; the rest are scattered across remote communities and cattle stations.

The climate is dry and warm in winter, with huge open skies that are clear and brilliant blue during this Dry season; and spectacularly stormy during the Wet (summer), and never better viewed than at night-time when you'll marvel at the millions of stars you normally can't see in built-up areas! The land is red, rich in minerals and steeped in the history of the last great gold rush of this nation.

## TENNANT CREEK AVERAGE TEMPERATURES

	Jan	Feb	Mar	Apr	May	Jun	Jul	Aug	Sep	Oct	Nov	Dec
High	37°	36°	35°	32°	28°	25°	24°	27°	31°	35°	37°	38°
Low	25°	24°	23°	19°	15°	12°	11°	13°	16°	21°	23°	24°

Tennant Creek is the central hub of the Barkly Region. It sits on Warumungu Country, with all twelve of the adjacent different Aboriginal languages spoken, as over the years, people have migrated into town from surrounding areas. The town has a relatively short history, having been born out of that last gold rush back in the 1930s, so local Aboriginal people still follow traditional customs and lore.



## WARUMUNGU WORDS

WARUMUNGU WORD	TRY TO SAY THE WORDS!	WHAT THEY MEAN <i>Not all words can be easily translated into an English meaning</i>
Karlu Karlu	Gull-oo-Gull-oo	Karlu Karlu also known as Devils Marbles
Warumungu	Warra-moong-oo	Local nation for the area
Karmente	Gummen-da	Goodbye
Tjukurpa	chook-orr-pa	Creation time, law, way of life, story
Nappa	Nar-pa	Water



Jurnkurakurr Mural

You will find a lively community of interesting locals. The Golden Heart reputation began with the mining era, but these days it is held sacred in the generous nature of the local inhabitants.

Take your time travelling through this region, it is a great place to slow your pace, take in the vast surroundings and enjoy the peaceful sound of the wind through the gumtrees, or whistling around the spinifex grass. There are plenty of opportunities to spot local wildlife and take beautiful photos.

It is a timeless landscape, which invites you to take your time. Have a yarn with the locals, there is always someone to chat with, whether a fellow traveller at a rest stop, or a local at the bar!

Whether you travel the bitumen highways, or go off-road on the Binns Track, you will find yourself in locations with no mobile or internet service, a disadvantage to some in the modern world, but a blessing for all those who long to switch off, to take in the surroundings and bask in the sunshine of our beautiful seasons.

Fuel supplies are a long distance between in the NT, so top up the tanks whenever you get the opportunity.

Mobile network coverage is limited from the outskirts of most outback towns. Download all maps, guides, fact sheets, audio guides while you have mobile coverage. Look for Wi-Fi hotspots located in more remote tourist sites.

Discover the **ARLPWE ART AND CULTURE CENTRE** in Ali Curung (Alekarenge), an easy 15 min drive on bitumen all the way, off the Stuart Highway, 170kms south of Tennant Creek or 350kms north of Alice Springs. This 100% Aboriginal owned, non-for-profit gallery, has stunning works from artists from Kaytetye, Alyawarr, Walpiri and Warumungu Nations. Open usually from 10am-4pm Monday-Thursday or give them a call to see if you can drop in on your way through.



20kms west off the Stuart Highway (good bitumen road)  
350kms North of Alice Springs  
150kms South of Tennant Creek

**www.arlpwe.com**  
(08) 8964 1640 | 0448 708 347  
manager@arlpwe.com







Nyinkka Nyunyu Art & Culture Centre

# ATTRACTIONS

From gold mining to beautiful granite landscapes, there's something in the Barkly to please everyone!

## NYINKKA NYUNYU ART & CULTURE CENTRE

Pronounced ny-ink-a ny-oo ny-oo, this gallery celebrates the art and traditional culture of the Warumungu people, on whose land Tennant Creek exists. The centre's focus is the sacred creation site of the Nyinkka (spiky tailed goanna). A self-guided tour will teach you the local customs and traditions, you'll learn about bush tucker, traditional medicines, and enjoy local exhibits or visiting shows. Stop in for a coffee at the café on site.

## BATTERY HILL MINING CENTRE

Located on the grounds of one of the original Government Stamp Batteries, used by the early miners to grind the dense ironstone to dust and releasing the precious gold sands. Discover the history, science, and the thrill of gold mining in the Barkly region. Enjoy an underground mine tour (fees apply) or wander through the three museums exhibits. Take a self-guided nature walk or admire the static machinery displays found around the site.

## DESERT HARMONY FESTIVAL

Barkly Regional Arts' annual Desert Harmony Festival is back in 2023, taking place from Friday 28 to Sunday 30 July at the Karguru Centre in Tennant Creek. The festival is a celebration of the Barkly's diverse, artistically-rich community through food, dance, music, visual arts and film. It is a cherished event in the Northern Territory's cultural calendar.



## TENNANT CREEK EVENTS 2023

### MAY 2023

#### Tennant Creek Cup May 13

A chance to dress up and try your luck with the locals and bookies.

### JUNE 2023

#### ABC Brunette Down Races June 22

Venture off-road to enjoy a truly Outback event. Camping facilities at the Brunette Downs Station.



### JULY 2023

#### Territory Day July 1

July 1st, Fireworks help celebrate the day the NT declared independence from the Commonwealth Government in 1978. [territoryday.nt.gov.au](https://territoryday.nt.gov.au)

#### Tennant Creek Show July 14

The second Friday in July is the Tennant Creek Show Day, an opportunity to enjoy cattle displays, a dog show and local arts & crafts.

#### Desert Harmony Arts Festival July 28-30

Check their website for festival events calendar and a great opportunity to engage with locals and celebrate your visit to Tennant Creek.

## FUN FACT

**DID YOU KNOW?** On the 8th December 1938, the largest gold nugget ever found in the Barkly region was discovered by Albert Lane and Jack Noble. It weighed 31 ½ ounces!

# Battery Hill

Gold Mining & Heritage Centre

Tennant Creek | Northern Territory

Experience the *thrill* of the  
gold mining heritage centre

## UNDERGROUND MINE TOUR

Discover the history, science and thrill of  
Gold Mining in Tennant Creek & The Barkly.

## FREEDOM, FORTITUDE & FLIES

Life of pioneer families on the goldfields.

## BORELLA MUSEUM

'100 Years of ANZAC spirit' exhibition.  
Journey of NT's Albert Borella VC MM.

## McLAUGHLIN MINERAL COLLECTION

Spectacular mineral groups - 1st class  
specimens from around the world.

**BOOK NOW**  
TOURS DAILY



Incorporating the  
**Tennant Creek Visitor Information Centre**  
Opening hours

Monday - Friday 9.00am - 4.00pm

Saturday & Sunday 9.30am - 4.00pm

Phone 08 8962 1281

Battery Hill, Peko Road - turn east at Westpac

**f**@visitBatteryHill | **@**@visitbatteryhill  
batteryhill@discoverca.com.au





# ACCOMMODATION

Whether you're camping under the stars or looking for air-conditioned comfort, all options are available across the Barkly.

Tennant Creek offers a range of accommodation options from Motel rooms to bush camping and is a great place to base yourself to make the most of what the Barkly region has to offer.

Out of town, there are roadside rest areas along both the Stuart and Barkly Highways, which are signposted offering overnight camping with basic facilities.

Parks & Wildlife have introduced an online booking system. Check all Parks for site availability prior to arrival.



NORTHERN  
TERRITORY  
GOVERNMENT



## DID YOU KNOW?

Mobile phones and chargers are one of the most common items to be left behind.

**Travel Tip:** Before departing, make sure to set your plugged-in phone on top of something else you won't forget. Items that are put together in 'clusters' make them less likely to be left behind.

Comfort is never far away with your stay at the **OUTBACK CARAVAN PARK**. This beautifully presented park is set among glorious shady trees and tropical gardens. With a shaded swimming pool providing welcome relief in the middle of the Territory's Golden Heart, you can enjoy a happy hour cheer before heading back to your self contained cabin or generous site. The staff strive to make your stay and your pet\* as comfortable as possible. \*Conditions apply



- Serviced Cabins
- Powered Caravan Sites
- Unpowered Tent Sites
- Swimming Pool & Mini Golf
- On-site Shop & Bar

**Ph: 08 8962 2459**



SOUTHERN CROSS  
MOTEL GROUP

[www.southerncrossmotelgroup.com.au](http://www.southerncrossmotelgroup.com.au)



# CARAVAN PARK ETIQUETTE

## ALWAYS THINK OF OTHERS

**NOISE** - Keep your music and noise to a level that is polite for your space only. If you are in a family park, which most are, children will always be children. Be tolerant.

**PETS** - Just because you love your pet, it may not be a comfortable animal for others. Always have your animals on a lead, fenced in or appropriately caged. Always pick up waste after your animal.

**WATER** - Check with each park if there is a fee for filling tanks due to drought. Some places are grateful for your grey water on the ground, others not so. Check first.

**AMENITIES** - Never empty your toilet cassette in the ablution block of any public toilet. Always clean up after yourself in shared bathrooms to avoid others falling. Think of others.

**SPEED LIMITS** - Stick to the limit. You're on holidays. Slow down.

**MIND YOUR SPACE** - Don't cut through other people's sites, especially under their awnings, just to save a few steps. Be neighbourly.

**RUBBISH** - Dispose of your rubbish in bins provided. Otherwise take it with you to dispose of elsewhere.

### TENNANT CREEK CARAVAN PARK

Base yourself for a few days to discover the best of the Barkly region. The friendly staff offer local knowledge to ensure you can make the most of your time. Pet friendly and drive through sites for easy parking, stop, enjoy, recharge!



**TENNANT CREEK**  
**CARAVAN PARK**

Powered Sites • Grassed Camping Sites  
Drive Through Sites • Camp Kitchen  
Cabins • Pool • Laundry • Unpowered Sites  
[www.tennantcreekcaravanpark.com.au](http://www.tennantcreekcaravanpark.com.au)

For Bookings & Enquiries  
**(08) 8962 2325**

[admin@tennantcreekcaravanpark.com.au](mailto:admin@tennantcreekcaravanpark.com.au)  
208 Paterson Street, Tennant Creek  
(North End Of Stuart Highway)





Perentie



Wattle Seed Damper



Bush Tomato

## BUSH TUCKER

Bush Tucker is growing all around Tennant Creek and the surrounding Barkly Region. You may not recognise some, as they are less obvious than farm sourced foods, but there is much that can be eaten and harvested.

### NATIVE FOODS AVAILABLE LOCALLY COVER ALL THE FOOD GROUPS:

**Meat from animals** – lizards, bush turkey, emu, kangaroos and wallabies, snakes and echidnas.

**Honey and nectars** – the honey ant, native bee honey, nectar from the native flowers, bloodwood and corkwood trees.

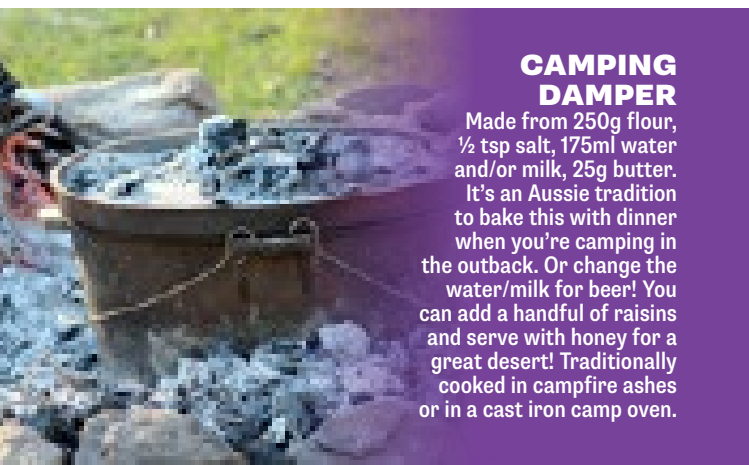
**Plant food** – from wild orange, wild passionfruit, wild fig, bush tomato, conkerberry, bush banana, bush plums and sultanas.

**Edible seeds** – the wattle seed, a staple food; the seeds can be ground into a paste or made into wattle seed damper. Other local seeds used traditionally are mulga, dogwood and desert kurrajong.

**Grubs and insects** – the witchetty grub is a favourite eaten raw or roasted on hot coals!

**Water** – the search for water in dry desert conditions was essential for survival; water is found in soakages, tree roots and hollows and the very scarce permanent waterholes and rare natural springs.

**Bush tomato** – A staple food which has been eaten for many thousands of years. Dried it looks like a raisin, and can be stored for extended periods, is plentiful and popular and is high in vitamin C and potassium.



## CAMPING DAMPER

Made from 250g flour, ½ tsp salt, 175ml water and/or milk, 25g butter.

It's an Aussie tradition to bake this with dinner when you're camping in the outback. Or change the water/milk for beer! You can add a handful of raisins and serve with honey for a great desert! Traditionally cooked in campfire ashes or in a cast iron camp oven.

# DINING

Enjoy the variety of options in Tennant Creek, from club bistros to relaxed restaurants and cafes. Give your camp chef the night off!



Tennant Creek offers a great range of dining option from some of the best Chinese food, great steaks, pubs & clubs specials to enjoy, motel restaurants that welcome all and wonderful morning coffee shop options to start your day.



Fabulous home cooked food and great coffee.

08 8962 1295 | 0437 703 984

[grace@bayleafcafe.net.au](mailto:grace@bayleafcafe.net.au)

2/163 Paterson St

Tue – Fri 7:00 am to 2:00 pm

Sat – Sun 7:30 am to 1:00 pm



**THE BAY LEAF CAFÉ** is Tennant Creek's favorite place for coffee, cakes, breakfast and lunches. Serving the best breakfast choices, delicious wraps and sandwiches, all which you can have in airconditioned comfort, or convenient take away. Relax and enjoy the lovely cakes and treats, smoothies or juice and you can pick up a tasty salad or one of their homemade delicious meals and save you having to cook later! Friendly service is free and generous in the serving size too, so pop in and excite your taste buds.

## OTHER CAFÉ & DINING OPTIONS:

Anna's Restaurant  
Memories Restaurant  
Woks Up Restaurant  
South Asian Taste

Red Centre Café  
BP Service Station  
Goldfields Hotel Motel  
Rocky's Pizza

Lucas Chinese Takeaway  
Jajjikari Café  
Sporties Bar & Grill  
Centrepoint Food



# SHOPPING

Look out for Market Day held fortnightly on Saturday mornings at the Transit Centre in the main street. Ask at the Visitor Centre for other local markets & events.

## BOTTLE SHOPS

We know the NT is warm, thirsty weather, but if your tippie is alcoholic, you'll need to plan ahead. Tennant Creek is a 'dry town' meaning that you cannot consume alcohol in public places within the town region. Bottle shops are open from 4pm until 7pm, Monday till Saturday, closed on Sundays. You will need photo ID to purchase alcohol and daily purchase limits apply.

Each region may have it's own take away bottle shop hours which can change, so check here to find out the most current trading times.



SCAN ME

## UNITED CHEMISTS TENNANT CREEK



Make sure you have all your medical supplies topped up while you travel. A great range of Chemist items, with a Newsagency for all your reading needs, stock up before you head off exploring.

**123 Paterson Street, NT, 0860, Australia**

**P: (08) 8962 2616 | E: [tennantcreek@udc.net.au](mailto:tennantcreek@udc.net.au)**

[www.unitedchemist.net.au](http://www.unitedchemist.net.au)

## OUTBACK OUTFITTERS



Whatever style of menswear you're after we have what you need. From work wear, clothing, shoes and accessories, we stock all the great brands and plenty of them! Enjoy easy parking and friendly service.

**A: 1/44 Paterson St, Tennant Creek**

**P: 08 8962 1957 M: 0458 015 321**

[outbackoutfitters@bigpond.com](mailto:outbackoutfitters@bigpond.com)

**LEADING EDGE**

**Computers**

Switched on Service

**jaycar**

**AUTHORISED STOCKIST**

Home & Business Computer Sales  
Printers, Fax Machines & Consumables  
Upgrades, Service & Repairs  
Office Furniture  
Data Backup & Recovery  
Warranty Agents for HP, Toshiba, ASI, Edsys



Network Support & Solutions  
Custom-built Systems (PCs & Servers)  
Managed Service Agreements  
Telephone Systems  
Internet Access & Solutions  
Jaycar Stockist

**LEADING EDGE COMPUTERS**  
**TENNANT CREEK PTY LTD**

**8963 2300**

**38 PATERSON ST TENNANT CREEK • FAX: 8962 3127**



Outback Outfitters

### LEADING EDGE COMPUTERS

Leading Edge Computers is run by a talented team of tech experts. They offer everything you could need to keep in touch while on the road, mobile phones, sim cards, phone credit, computers, laptops, and even high-tech toys for the 'big kid' onboard! Get your laptop serviced to keep safely in contact with the family back home.

### ENTERPRISE ELECTRICS

Enterprise Electrics Pty Ltd have been supplying the Barkly with quality furniture, giftware, jewellery and electrical since 1980! This family-owned and operated business has become the 'go to' shop for just about everything from gifts, white goods, electrical appliances, jewellery and even your weekly lotto tickets, we have it all! Come visit our friendly staff with easy parking out the front.



**ENTERPRISE**  
ELECTRICS • FURNITURE  
JEWELLERY • GIFTWARE

*FURNISHING THE BARKLY SINCE 1980*













**OUR LARGE VARIETY INCLUDES:**

Greyhound Booking Agent • Tilleys Candles & Soaps • Gifts  
Jewellery • Toys • White Goods • Furniture • Homewares  
Educational Toys • Home Entertainment • Telstra Phones & Credit  
Power Cards • Manchester & Much More

**Free Delivery Within Town Boundries**

(08) 8962 2280 • 40 Paterson St • [tennantcreekleadingappliances.com.au](http://tennantcreekleadingappliances.com.au)



# COMMUNITY CLUBS

*proudly presented by*

## STEVE EDGINGTON MLA – MEMBER FOR BARKLY



MLA Mr Steven Edgington invites you to visit the range of local community and service clubs to really get to know the locals.

**PO Box 796, Tennant Creek, NT 0861**

**114 Paterson Street, Tennant Creek, NT 0860**

**P: (08) 8962 4641**



[electorate.barkly@nt.gov.au](mailto:electorate.barkly@nt.gov.au)



## BARKLY AUSTRALIAN FOOTBALL LEAGUE

Featuring Clubs from the Barkly region.  
From May-Sept,  
Purkiss Reserve

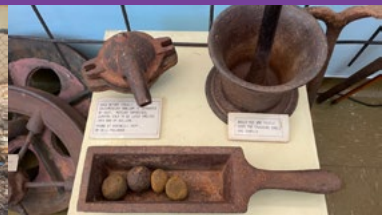


## LIONS CLUB OF TENNANT CREEK

Meets at 7pm, 1st & 3rd  
Wednesday each month  
at the Memo Club  
0400 395 525



[kate.m.foran@gmail.com](mailto:kate.m.foran@gmail.com)



## NATIONAL TRUST TC BRANCH

Call in, and step into the  
past. Open limited hours.  
49 Schmidt St



[nationaltrusttennantcreek@gmail.com](mailto:nationaltrusttennantcreek@gmail.com)

## CWA OF TENNANT CREEK

Visitors Welcome  
16 Noble Street  
0418 825 856



[cwa.tennantcreek@gmail.com](mailto:cwa.tennantcreek@gmail.com)



# TRAVEL WITH PETS

Travelling with our furry or feathered friends allows all the family to enjoy a holiday! Being prepared is the key to ensure every member is kept safe

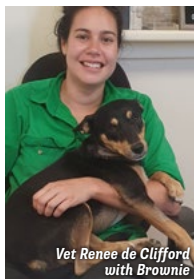


## KEEP A LOOK OUT!

New to Australia, Ehrlichiosis is a dangerous dog disease, carried by brown ticks found across northern Australia. Left untreated, it can be fatal, so please use tick prevention to keep your dog safe.

## PREVENTION MEDICATIONS

- Internal medicines will kill any ticks on your dog. Just be mindful that if infected, it is that tickbite which infects your dog! Ehrlichiosis isn't passed simply from dog to dog, it spreads through the ticks.
- The first line of defence is a fresh tick repellent collar. Note the date and change as required. Most collars work best when kept dry.
- Regularly inspect your dog. Ticks hide in small crevices: inside ears, between toes and under their paws, between the pads.
- When travelling north, ask your vet about Heartworm prevention.
- Heartworm is spread by mosquitos. Protection is available via an annual needle or monthly tablets.



Vet Renee de Clifford  
with Brownie

## PET TRAVEL TIPS

- Carry your pet's medical info, including vaccination records.
- Ensure your pet is harnessed or crated for their own protection in the car.
- Carry extra water & bowls to allow for the heat.
- Remember heat affects their paws as well. Be mindful of hot ground!
- Take care when out bush, baits are used to protect stock in the NT.



## DID YOU KNOW?

Kunapa - pronounced Kunn-upp-pa - is the Warumungu word for dog!!

## BARKLY VETERINARY PRACTICE



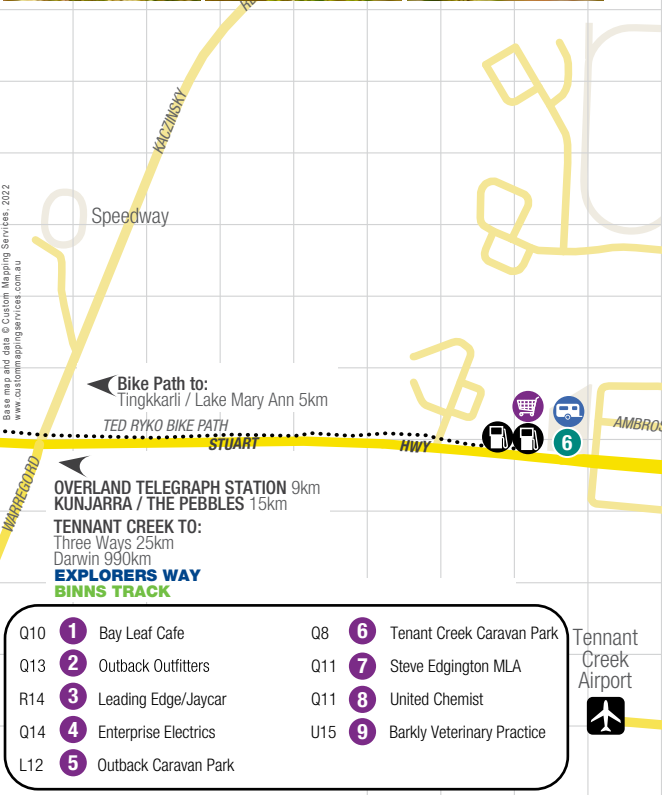
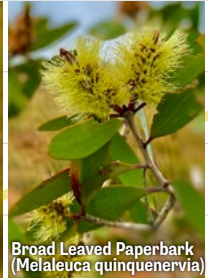
Trusted by locals, we open Mon-Fri & after hours for emergencies. See us for any pet health issues and advice.

**1 Maloney Street, Tennant Creek**  
**0447 471 399**

[www.facebook.com/BarklyVetPractice](https://www.facebook.com/BarklyVetPractice)

1 2 3 4 5 6 7 8 9

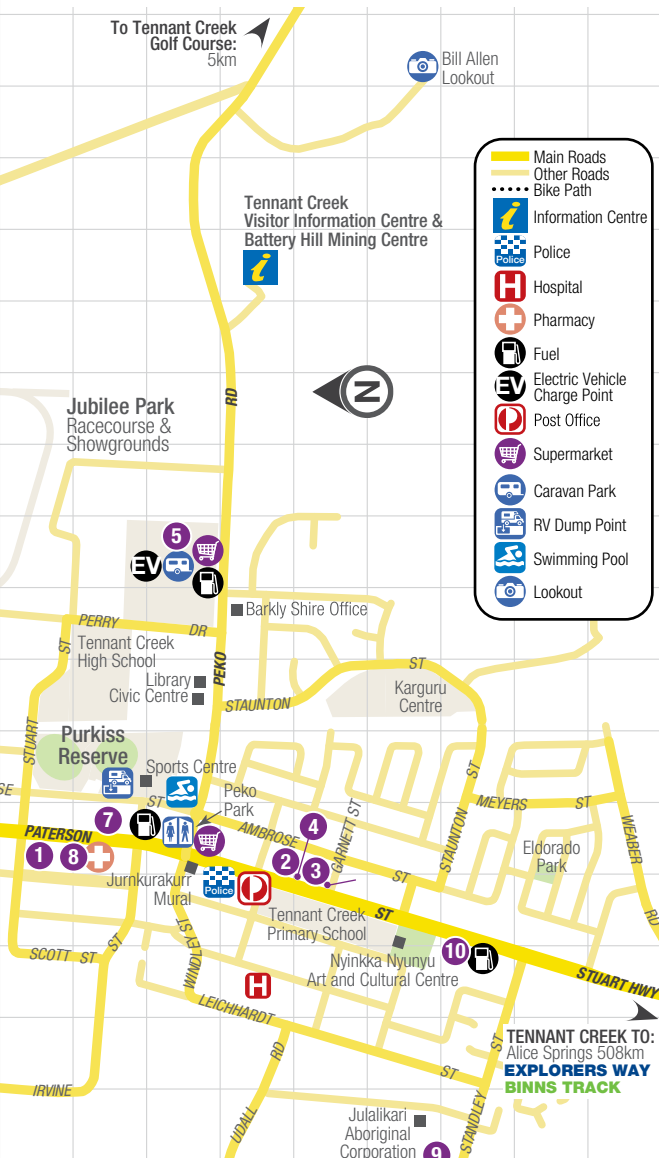
A  
B  
C  
D  
E  
F  
G  
H  
J  
K  
L  
M  
N  
P  
Q  
R  
S  
T  
U



1 2 3 4 5 6 7 8 9

# TENNANT CREEK TOWN MAP

0 250 500 750 m





Tennant Creek Overland Telegraph Station

## OVERLAND TELEGRAPH STATION

Tennant Creek Overland Telegraph Station was completed in 1872, so be on the lookout for 150th Anniversary celebrations! Located near the actual Tennant Creek watercourse, 12km north of town, this heritage site offers visitors an insight into the early living and working conditions of the employees.

The single copper wire, running from Adelaide to Darwin, a mighty 3600km long was the only communication link between Australia and England. This was strung along a path mapped by intrepid explorer, John McDouall Stuart, after whom the highway is named.

Take the self-guided walk around the reserve if you pick up a key and information sheet is available at the Visitor Information Centre (deposit required) and explore the historic station buildings made of local stone.

On a walk through the station buildings, you'll also learn of the discovery of gold in the area in 1925 and how thousands flocked to Tennant Creek. Explore at your own pace the interesting interpretive signage explaining the use of such rooms as the The Cellar, The Smoke House and in other buildings the Blacksmiths Workshop. A 100m stroll you will discover the Cemetery, the resting place of pioneers of the past.

## KUNJARRA/THE PEBBLES

Kunjarra is the Warumungu traditional name for The Pebbles, an outcrop of red granite boulders smaller than the Devils Marbles. Signage explains the traditional customs here, and walking paths guide you to wander between the clumps of boulders, enjoying the colours of the rocks. Best viewed when the sun is low in the sky, at sunrise or sunset, to get the richest red colours in the boulders. Enjoy a picnic at the tables here, with toilets onsite and overnight camping allowed.



Kunjarra / The Pebbles





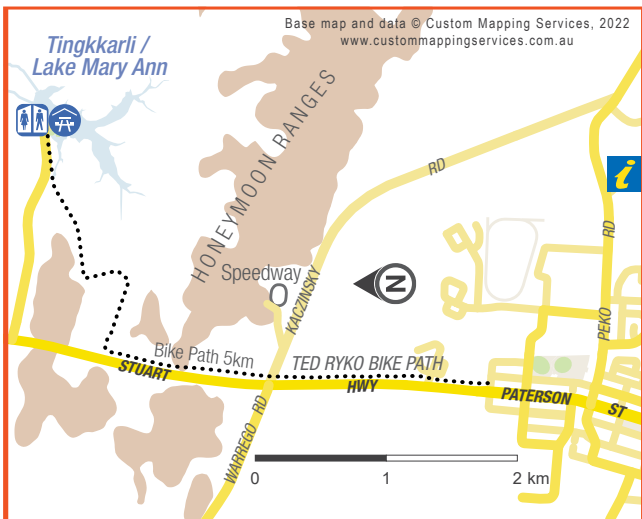
Tingkarli / Lake Mary Ann

## TED RYKO BIKE PATH

The Bicycle Path which leads from Tennant Creek, through the hills of the Honeymoon Range, and out to Tingkarli/Lake Mary Ann, is named after Ted Ryko (full name Eddie Reichenbach) who set the unbroken bicycle record from Adelaide to Darwin back in 1914. This arduous journey took him just 28 days! Walkers and cyclists enjoy the path which meanders through the hilly range, offering sights of local birds and wildlife. A quiet walker may see beautiful lizards crossing the path.

## TINGKKARLI/LAKE MARY ANN

A lovely recreational watercourse, constructed by the NT Government in 1980. The dam wall closes off a valley which fills from the catchment area of Mary Ann Creek. Non-powered water sports are enjoyed here, such as swimming and kayaking. The view across the lake can be enjoyed from lush green lawns, with shady trees, BBQs and picnic tables, along with a fabulous new playground area. Take the walk around the lake to enjoy the natural bushland on the other side.



Lake Mary Ann Mural



*Cattle from Banka Banka Station*

# NORTH OF TENNANT CREEK

## EXPLORERS WAY

This part of one of Australia's great road trip is full of adventure and important historic sites.

### REV. JOHN FLYNN

North of Tennant Creek, at the junction of the Stuart and Barkly Highways, just past Threeways Roadhouse, is the memorial obelisk constructed to celebrate the local significance of the Rev. John Flynn. A Presbyterian Minister, Flynn surveyed the needs of remote inhabitants of the Northern Territory in 1912. His report led to the creation of the Australian Inland Mission, with Flynn as Superintendent.

Recognising the needs of isolated remote communities, Flynn's efforts resulted in a network of nursing hostels, which grew into the Royal Flying Doctor Service, still providing a 'mantle of safety' in the Outback today!



Further south, at Karlu Karlu/Devils Marbles Conservation Reserve, is another story relating to Reverend Flynn.

### CHURCHILL'S HEAD

As you travel this route, you are following in the footsteps of a quarter of a million military servicemen and women who travelled this route during WWII, to defend Australia following the attacks on Darwin in 1942. A natural outcrop of rock resembling Britain's Prime Minister at the time, Winston Churchill, had a tree branch inserted into the rocky 'mouth' to resemble his cigar, cementing the site as a popular military resting spot, still known as Churchill's Head today.



Jones Store, Newcastle Waters

## WATCH FOR WEDGE-TAILED EAGLES!



Slow down if you see a Wedge-Tailed Eagle feeding on the side of the road. With huge wingspans of up to 3 metres they can be slow to take flight. These big birds of prey are easily injured and can do extensive damage to a vehicle. Slow down and be aware.



Jones Store, Newcastle Waters

## NEWCASTLE WATERS

280 kms north of Tennant Creek on the Stuart Highway, Newcastle Waters is the northern boundary of the Barkly Region. A sealed 3km drive into Newcastle Waters Historic Township show the this important staging post, with the town providing critical communications in such a remote location. The surviving buildings are worth a visit, along with the Drover's memorial statue paying respect to the critical local cattle industry.

## BANKA BANKA WEST

An Aboriginal managed cattle station in the heart of the Northern Territory. Affordable powered & unpowered camp sites, cabins, 3 bedroom accommodation & licenced bar. Original heritage listed homestead, Aboriginal culture, and a historical WWII staging camp.

## DUNMARRA ROADHOUSE

Dunmarra is a fine example of the welcoming roadhouses scattered around the Barkly Region. There is a selection of cabins to stay in, or a camping ground to pull up at. Amenities include a restaurant and lounge to relax in. The food is renowned up and down the track. You don't want to miss out on treating yourself to the homemade vanilla slices, they are divine!

**NEW CABINS!**  
Call now for bookings

**The Best Home-Made Pies & Vanilla Slice along the Explorers Way!**

**In-house Brewery coming!!!!**

Motel Rooms • Swimming Pool  
Caravan Park – Shady Sites  
Take Away Food• Dine-In Meals  
Licensed Bar • Airstrip

Base yourself here and enjoy  
birdwatching & WWII  
connections all close by



**Stuart Highway**  
358kms North of Tennant Creek  
315kms South of Katherine  
Ph: 08 8975 9922  
Open: Early to Late 7 Days



## UNCONVENTIONAL COMPASS

Hold your watch horizontal to the ground, point the 12 towards the sun.

Mid-point between the 12 and hour hand indicates the north-south line.

# Welcome to

The  
**OUTBACK**  
Way



**SCAN ME**

Heading from west to east, starting in Laverton, Western Australia to Winton, Queensland via the Northern Territory's Red Centre and travels along a well-worn track through the heart of Australia. Covering around 2,700km, The Outback Way is Australia's version of Route 66, the great Australian road trip, one you can unearth the magic of an outback journey like never before. The colours will constantly change, from beautiful to amazing, as only the Australian outback can offer. Collect memories with every kilometre and take your time to savour the unique architecture of every mountain range, marvel at nature's diversity where you get to awaken your senses.

You can zig-zag the nation along the trail or do shorter, invigorating trips. Immerse yourself in Indigenous culture and explore the Art Trail, hear the whisper of the desert oaks. Be amazed at the pioneering stamina all along the way, join in the country spirit of an outback festival and dance with the dinosaurs in Winton. Fossick for gems at THE GEMTREE, make paper out of spinifex at Curtin Springs Station, watch a weather balloon launch in Warakuna. At each of your stops along the way you will be richer for learning a little more about this amazing country we share.

## Geocache along The Outback Way

Find treasures with 35 caches hidden along the way. Keep the kids interested and excited about what is yet to come. Register online at [outbackway.org.au/shop/](http://outbackway.org.au/shop/) \*fee applies



## DRIVING TIP: MAINTAIN A GAP

On sealed roads always maintain at least a 2-3 second gap between each vehicle. On dirt roads and tracks you need a lot more, as stopping distances are greatly increased. It makes no sense to drive in someone's dust cloud!





# 102.1FM

**8CCC COMMUNITY RADIO**  
ALICE SPRINGS & TENNANT CREEK

# TUNE INTO THE SOUNDS OF OUR COMMUNITY

## MANY VOICES ONE FREQUENCY

## 8CCC.COM.AU



Like us on Facebook  
[/8CCCRADIO](#)



Follow us on Twitter  
[@8CCCRADIO](#)



Follow us on Instagram  
[@8CCCRADIO](#)



Streaming & On Demand  
[8CCC.COM.AU](#)





# SOUTH OF TENNANT CREEK

## EXPLORERS WAY

Along this section of your adventure, drop into one of Australia's favourite natural icons.

### KARLU KARLU

Karlu Karlu is the traditional Aboriginal name for Devils Marbles, the most famous landscape of the Barkly Region. Historically, this site was a meeting point for four neighbouring Aboriginal language groups, Warumungu, Kaytetye, Alyawarre and Warlpiri.



There are many traditional stories attached to this landscape, but the one offered for visitors is that a spiritual devil man, Arranji, walked through the valley spinning hair strings, important to men's cultural ceremonies, dropping them to the ground which then formed into the boulders which lay in clumps, precariously balanced upon each other.

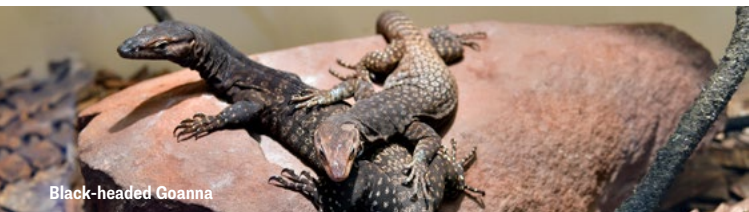
Local people believe that the spirit of Arranji remains resting at Ayleparrantenhe, a twin peaked hill to the east of the public reserve.

A more modern story of this place relates to The Rev. John Flynn, founder of the Royal Flying Doctor Service. Flynn's ashes were buried on Larapinta Road, heading west out of Alice Springs, and a boulder was selected and removed from Karlu Karlu, to be placed on a plinth to commemorate the importance of Flynn, in the early 1950s. Finally, in 1999, the Arrernte people of Alice Springs selected a local rock and the 8 ton boulder was returned to its traditional home, back at Karlu Karlu.



Elders at the time guided the cranes to return the boulder to its exact original place. Today the boulder can be identified due to being sandblasted to remove graffiti, so it is lighter than other rock forms. It is seen as a metaphor for reparation, but not without change. You can see it now in its original position, just south of the main day visitor car park area.

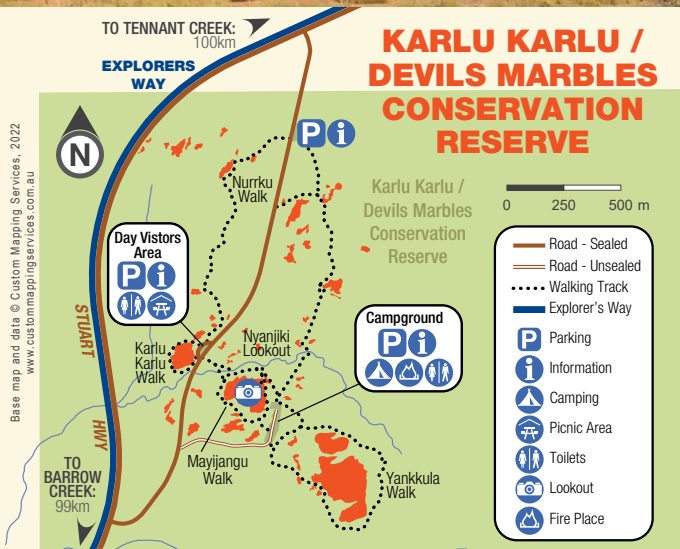
Parks & Wildlife have introduced an online booking system. Check all Parks for site availability prior to arrival.



Black-headed Goanna



Karlu Karlu/Devils Marbles



## Walking

There are several walks to enjoy, including the Nyanjiki Lookout providing a panoramic view of the Reserve. The Karlu Karlu walk is an easy short walk (20 minute return) which commences from the day use area carpark. Signs explain the formation of the Karlu (Marbles). The 4 km Nurrku Walk provides visitors with a longer opportunity to experience the wider Reserve.

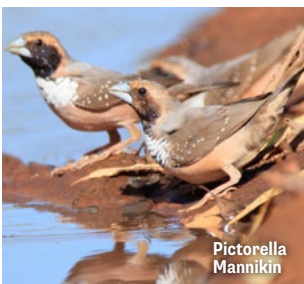
**Camping Fees apply** -Cash only - No change available onsite  
Pets are not permitted in the campground.

## FLORA & FAUNA IN THE REGION INCLUDE:

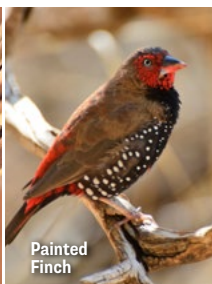
Sand Goanna - Black-headed Goanna - Fairy Martins - Zebra Finches - Painted Finches - Spinifex - Native Rock Fig



Grey Fronted Honeyeater



Pictorella Mannikin



Painted Finch



Whistle Duck Creek

## IYTWELEPENTY/DAVENPORT RANGES

### PART OF THE BINNS TRACK

This National Park overlays a rich living cultural landscape of the Alyawarr, Wakaya, Kaytete and Warumungu traditional owners. Experience the quiet beauty of this park, with access via high clearance 4WD only. Discover European heritage sites from early pastoral and mining days.

Explore this out of the way network of permanent waterholes, and beautiful outback landscapes, on some of the best four-wheel drive tracks in the NT. These tracks criss-cross the 1120 square kilometre park, including a challenging 17-kilometre Frew River loop track to the Old Police Station Waterhole. Stay in the camp sites at the Old Police Station Waterhole or at Whistleduck Creek. Enjoy swimming in the cool waters or just soak up the serenity.

**Camping Fees apply** -Cash only - No change available onsite

There are only basic camping facilities in the Park so come well prepared. Wood BBQs and Pit Toilets are available. Camping is only permitted in designated camping areas.

Pets are prohibited.

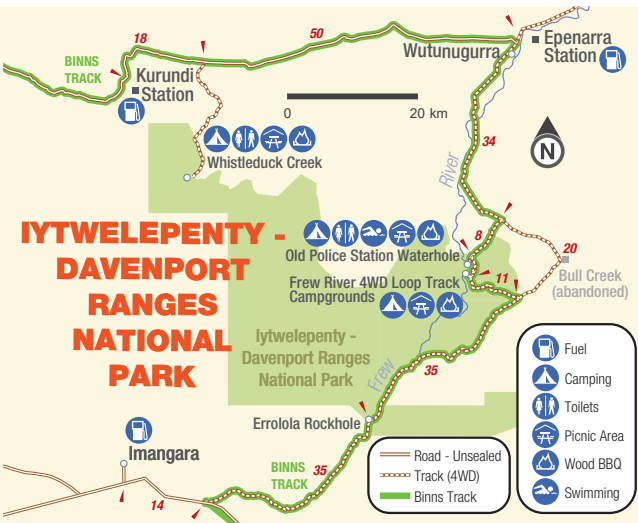
This is an ecologically significant & diverse area so please leave only footprints and respect the water and surrounds.

### FLORA & FAUNA IN THE REGION INCLUDE

Blackfooted Rock Wallaby - Emu - Australian Bustard - Bush Turkey - Zebra Finch - Dusky Grasswren



SCAN ME





Barrow Creek Telegraph Station

## BARROW CREEK TELEGRAPH STATION

Barrow Creek was named in 1860 by John McDouall Stuart, this site for the Telegraph Station was chosen in September 1871 by John Ross' Overland Telegraph exploring party, which was assessing Stuart's route to set up a telegraph line through Central Australia. The site was chosen due to the presence of surface water and for a well site of about 10 to 12 feet. By 1880 the station was very much in its present form with an elaborate stone fence, wagon shed, blacksmith's hut, cemetery and a veranda on the western side of the main building.

## BARROW CREEK HOTEL

Barrow Creek Hotel is a pleasure to visit. You'll spend hours just reading the walls! Visitors before you have left messages and greetings, adding to the colour and character of this Outback Pub! Accommodation consists of airconditioned rooms, powered and unpowered camping sites. Enjoy a drink at the bar, or a hearty meal, along with a yarn with the locals.



## BARROW CREEK HOTEL

**Open 8am–10pm**  
(call for Summer trading hours)  
**Ph: 0429 202 714**

**Historic Hotel • Motel Rooms • Caravan Park  
Takeaway & Evening Meals • Store with Essentials  
Diesel • Unleaded • Premium  
Airstrip • Optus & Telstra**

**Nearby Attractions:**  
**Barrow Creek Telegraph Station  
Escarpment Drives**





## BINNS TRACK

### AN EPIC 4X4 ADVENTURE HIGHLIGHTING LESSER KNOWN SIGHTS

Binns Track is a marvellous alternative route to the Stuart Highway, a perfect playground for 4 wheel drive enthusiasts, which meanders off the bitumen, through vast cattle stations and stunning remote Aboriginal cultural landscapes. The entire track length is 2,230km and named after Mr Bill Binns, an NT Parks & Wildlife Ranger for 32 years, whose vision was to ensure that visitors to the NT were able to explore more of the wonderful local landscapes off-road, enjoying the vivid colours, native wildlife and magnificent rocky vistas.



**GEMTREE TO TENNANT CREEK** - 509 km 2+ Days As you travel north, to Iltwelepenty/ Davenport Ranges National Park you can embrace the peaceful surrounds, enjoy a swim in the surprisingly beautiful waterholes or stay and camp in this tranquil setting. A short detour to Karlu Karlu/ Devils Marbles is a must do. Home to massive granite boulders which glow fantastically at both sunrise and sunset, an overnight stay here will produce some of your favourite photos of the whole journey!

**TENNANT CREEK TO DUNMARRA** - 355 km 2+ Days Stopover in Tennant Creek to discover gold history at Battery Hill Mining Centre or the unique Nyinkka Nyunyu Art & Culture centre. The Telegraph Station, and Lake Maryann, all north of Tennant Creek offer wonderful day trips. Then journey north, past Churchills Head, on your way to an overnight stay at Banka Banka then Dunmarra.

**DUNMARRA TO TIMBER CREEK** - 430 km 2+ Days

# Aileron Roadhouse



## Stay & Explore

- Caravan Park
- Motel
- Backpackers
- Wildlife
- Scenic Walks
- Art Gallery
- The famous 'Anmatjere Man' (17 metre statue)

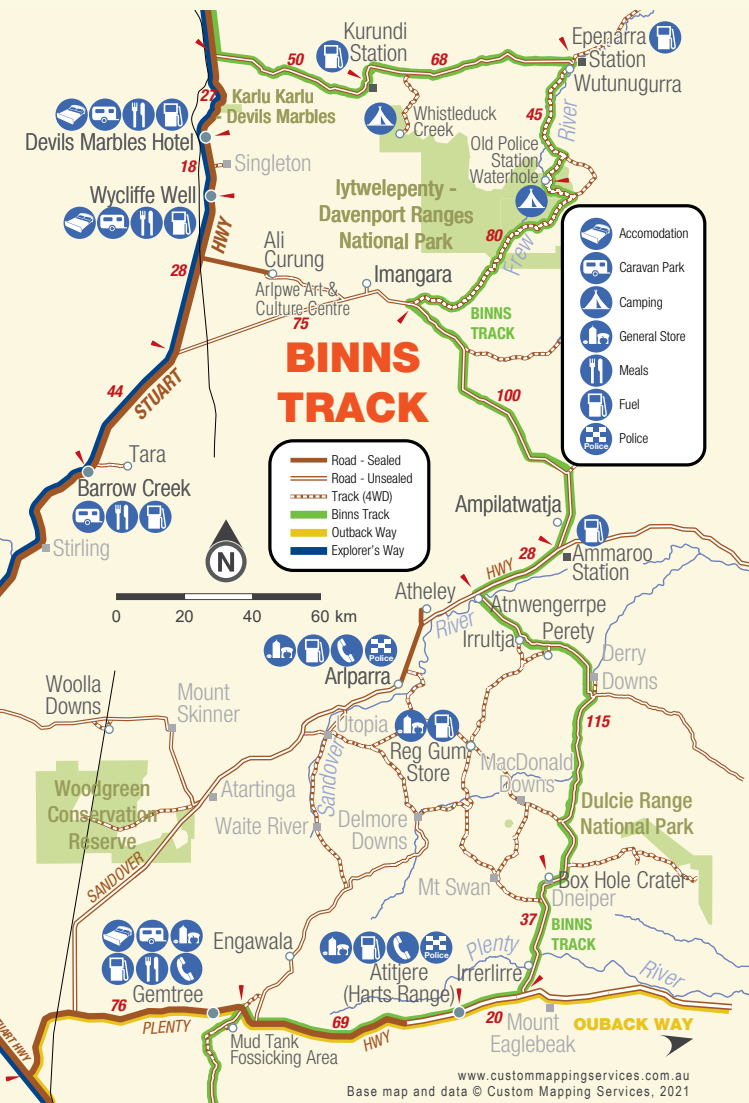


**Ph 08 8956 9703**

[www.aileronroadhouse.com.au](http://www.aileronroadhouse.com.au)  
132kms North of Alice Springs

Stuart Highway, Northern Territory





# Gemtree

- Assorted A/C Cabins & Rooms • Powered & Unpowered sites
- Billabong Bar and Camp Oven kitchen
- Fossicking Tours • Gem Room • Museum • Shop with fuel & takeaway

140kms North East on sealed road from Alice Springs

**PH: (08) 8956 9855**

**www.gemtree.com.au**

Quality Tourism Australia

Facebook icon



# ROAD TRIP DRIVE TIPS

- Travelling through the NT involves vast stretches of open road, whether on the bitumen or off-road 4WD tracks. The highway speed limit through the Barkly Region is 130km per hour, unless otherwise signposted.
- Reduce to a safe slower speed on unsealed roads, and do not attempt 4WD tracks with a 2WD vehicle.
- Don't drive tired, long distances and extreme heat can cause driver's fatigue, so stop and rest frequently (every 2 hours) at regular rest stops.
- Many roads pass through national parks and stations. Avoid driving at dusk, dawn or in the dark as stock/wildlife may cross the roads. Do not swerve suddenly and safely reduce your speed.
- Note that different school zone times apply in the NT.
- Don't drive in convoys, especially if towing a caravan. Allow at least 200m between vehicles, to allow road trains to overtake safely.
- Plan your fuel stops as roadhouses are far apart, check your tyre pressure. Regularly clean windscreens, mirrors and windows.
- Ensure pets are correctly restrained by using a secured crate or a pet seatbelt.
- Plan activities to keep children content.
- Road conditions can change quickly, particularly in the Wet Season during October to May.
- Plan your route and check in regularly with a responsible person. Mobile phone coverage is limited, so plot your approximate arrivals and departures and don't forget to update your contact.

## BEFORE YOU DEPART:

- Check your vehicle is safe and roadworthy
- Check road conditions and weather reports

Check road conditions within NT parks -  
4WD and 2WD tracks:  
[roadreport.nt.gov.au/home](http://roadreport.nt.gov.au/home)

											ERLDUNDA
WCLIFFE WELL	WAUCHOPE	TIT TREE	TIMBER CREEK	THREWAYS	TENNANT CREEK	RENNER SPRINGS	PINE CREEK	MATARANKA	LARRIMAH	KULGERA	KATHERINE
											JABIRU
820	841	639	1912	978	953	1114	1717	1520	1444	332	1626
	20	182	1092	157	133	294	896	699	623	662	806
		203	1069	143	111	281	874	679	603	673	784
			1273	339	314	476	1077	881	805	480	987
				935	959	798	376	392	468	1753	286
					25	137	739	542	466	818	649
						161	763	566	490	794	673
							602	405	329	955	512
								197	273	1557	91
									76	1361	106
											485
											213
											975
											814
											951
											588
											1290
											1086
											1929
											246
											1683
											303
											1770
											409
											1274
											869
											708
											732
											1666
											393
											573
											575

FIND THE WONDER WORD!

Circle each word or letter and tick them off the list.  
See what the Wonder Word is with the letters that are left.

R	E	G	N	I	V	I	R	D	U
E	T	I	M	R	E	T	A	L	S
D	L	O	G	U	X	V	R	P	O
Y	K	S	M	Y	E	A	M	O	S
N	Y	I	N	N	K	A	R	L	L
P	N	A	P	U	C	A	L	A	I
E	L	O	L	Y	G	O	R	K	V
P	R	R	A	N	G	E	S	E	E
T	A	M	A	R	B	L	E	S	D
K	E	K	Y	R	E	T	T	A	B

Wonder Word: EXPLORE

- Battery

Camps

Davenport

Devils

Driving

Gold

Kangaroo

Karlu Karlu

Lake
- Marbles

Mine

Nyinnka

Nyunyu

Plan

Ranges
- Red

Sky

Termite

Gold Kangaroo Karlu Karlu Lake		Ranges										DISTANCE GRID	
												Measured in kilometres Approximate distances only	
ELLIOTT	DUNMARRA	DARWIN	DALY WATERS	BROOME	BARROW CREEK	BARKLY HOMESTEAD	ALICE SPRINGS	ADELAIDE RIVER	ADELAIDE				
									2911	ADELAIDE RIVER			
									1384	ALICE SPRINGS			
									1531	BARKLY HOMESTEAD			
									2249	BARROW CREEK			
	4266	BROOME											
	2443	DALY WATERS											
	3027	DARWIN											
	2396	DUNMARRA											
	2292	ELLIOTT											
961	1065	1696	1113	2937	491	919	200	1584	1331	ERLDUNDA			
722	618	255	576	1858	1198	1138	1484	299	3014	JABIRU			
420	315	316	273	1556	895	875	1181	203	2711	KATHERINE			
1047	1152	1783	1199	3023	572	1005	286	1670	1268	KULGERA			
237	133	498	90	1739	712	653	999	385	2529	LARRIMAH			
313	209	422	167	1663	768	729	1075	309	2605	MATARANKA			
510	406	226	363	1646	985	965	1271	113	2801	PINE CREEK			
92	196	828	244	2068	383	371	678	704	2199	RENNER SPRINGS			
253	358	989	405	1801	222	211	508	876	2038	TENNANT CREEK			
229	333	964	381	2205	246	219	533	852	2063	THREEWAYS			
706	601	601	559	1270	1181	1159	1467	489	1997	TIMBER CREEK			
568	672	1303	719	2543	93	566	194	1190	1724	TI TREE			
366	466	1100	515	2342	88	363	397	985	1925	WAUCHOPE			
386	490	1121	538	2362	89	344	376	1009	1906	WYCLIFFE WELL			
1207	1311	1942	1359	3183	731	1164	446	1829	1576	YULARA			

# 5 DAY SUGGESTED ITINERARY



## DAY 1

- ▶ Visitor Information Centre
- ▶ Mining Centre - museums, nature walks, static machinery displays
- ▶ Bill Allen Lookout
- ▶ Local Shopping - Main Street

## DAY 2

- ▶ Enjoy coffee and breakfast at Bay Leaf Cafe
- ▶ Tennant Creek Telegraph Station Historical Reserve - Information Sheet & deposit for key @ Visitor Centre
- ▶ Kunjarra / The Pebbles - Aboriginal Womens Dreaming



## DAY 3

- ▶ Karlu Karlu / Devils Marbles - enjoy as a day trip only 100km south of Tennant Creek or camp overnight
- ▶ A photographer's delight - Sunrise / Sunset

## DAY 4

- ▶ Nyinkka Nyunyu Art & Culture Centre - museum and exhibitions
- ▶ National Trust - Check for open times
- ▶ Jurnkurakurr Mural
- ▶ Peko Park
- ▶ Catholic Church
- ▶ Celebrity handprints

## DAY 5

- ▶ Lake Mary Ann - shaded picnic area & tables/chairs, playground, swim/kayak/ water fun, abundant birdlife
- ▶ Ted Ryko Cycle Path
- ▶ Anzac Hill Lookout

## FLOCKING TO THE BARKLY REGION

Tennant Creek and the Barkly Region is treat for those who have an interest in birds in Australia. With little water to the south and the tropics to the north, this region is a transitional area for many unique birds.

Take the time to explore a few key areas of interest including the Tennant Creek Water Waste Treatment Plant, via Fazeldeen Road. You could be lucky to see a huge variety of birds.

Other species are found at Lake Maryann, just a few kms south of Tennant Creek. In the hill area as you drive in, keep a look out for the Painted Finch, Crimson Chat, Spinifex bird, Spinifex pigeon and the Dusky Grass wren can be found in the rocky outcrops and as you get closer to the water.

Renner Springs north of Tennant Creek, to the south Karlu Karlu/Devils Marbles and Iltwelepenty/ Davenport Ranges also offer unique opportunities.

So, get your guidebooks out, camera ready and enjoy a slow, quiet pace to really make the most of the variety this special region has to offer. See if you can tick a just a few of what you might discover.

- |                       |                           |
|-----------------------|---------------------------|
| ■ Dusky Grass Wren    | ■ Crimson Chat            |
| ■ Red-Necked Avocet   | ■ Red-Kneed Dotterels     |
| ■ Grey Teal Cuck      | ■ Spinifex Bird           |
| ■ Spinifex Pigeon     | ■ Black-Fronted Dotterels |
| ■ Black-Winged Stilts | ■ Hoary-Headed Grebe      |
| ■ Painted Finch       | ■ Orange Chat             |



*Dusky Grasswren*



*Red-Necked Avocet*



*Rainbow Finch*



*Orange Chat*



*Fairy Wren*